

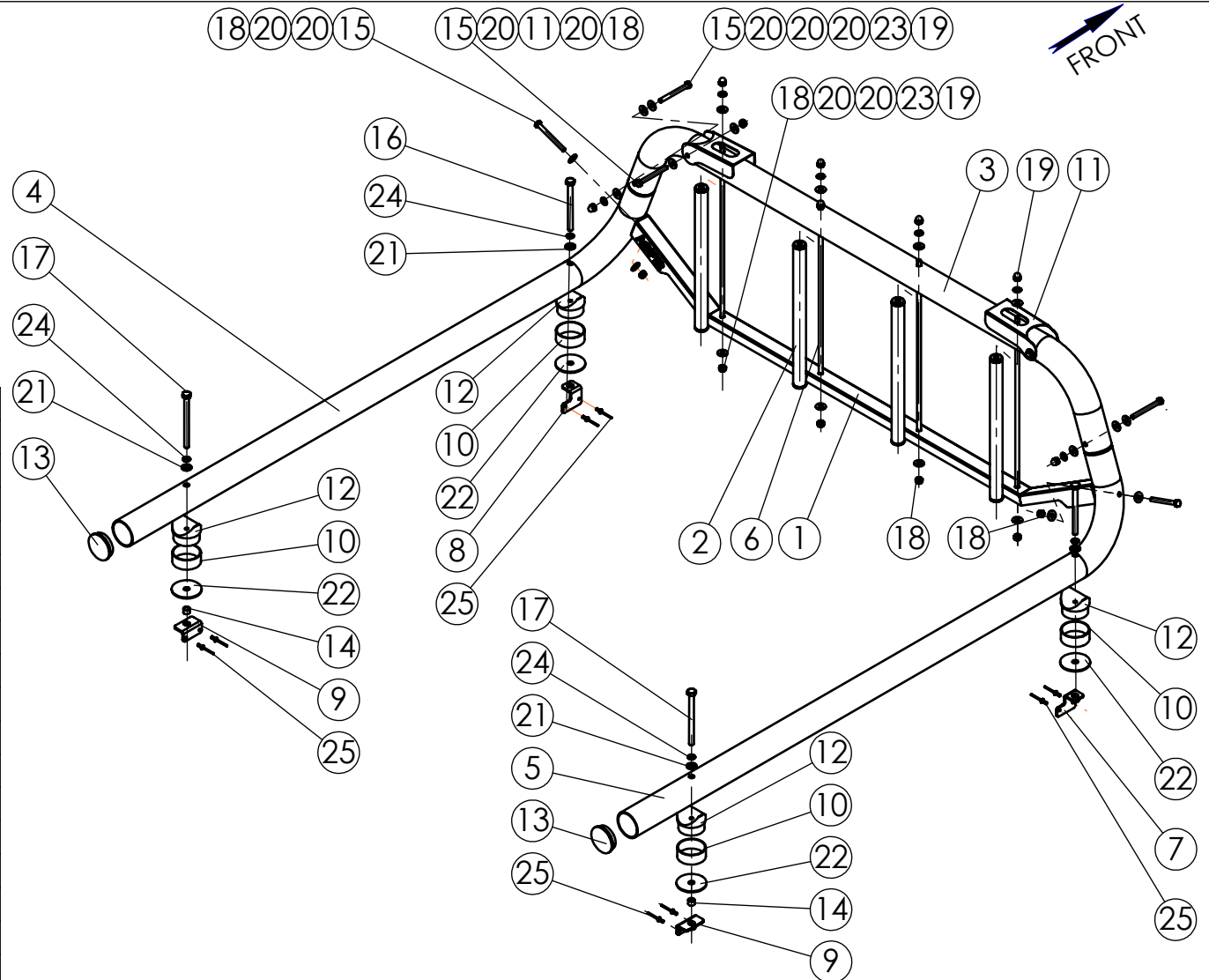
Confidential

All rights in and to this document are property of ASFIR Ltd. and reserved to it. This document is forwarded to the recipient under the condition of and subject to the obligation of the recipient to keep the confidentiality of its contents. Copying transfer of distribution of this document or its contents and the use of it not for the purpose intended-are strictly forbidden.

**Maximum Tightening Torques**

M8 (8.8)	25 Nm
M10 (8.8)	50 Nm

Item	Part number	Description	QTY.
1	MTW60.010.000	Lower Bar	1
2	MTW68.020.000	Pole	4
3	MTW68.000.001	Central pipe	1
4	MTW68.000.002	Left pipe	1
5	MTW68.000.003	Right pipe	1
6	MTW68.000.009	Thread rod	4
7	MTW60.000.004	Front Lower Right Bracket	1
8	MTW60.000.004L	Front Lower Left Bracket	1
9	MTW60.000.005	Rear Lower Bracket	2
10	MTW60.000.006	Spacer	4
11	DOW09.000.007	Holder	2
12	10133	Round black spacer 60	4
13	2221	Plastic plug 2"	2
14	-	Spacer D14x1.5 SS304 L=10 mm	2
15	1058	Hex Bolt M8x80 DIN 931	6
16	1053	Hex Bolt M10x1.5x120 DIN 931	2
17	1146	Hex Bolt M10x1.5x130 DIN 931	2
18	3005	Hex Nut Nylock M8 DIN 985	8
19	3100	Domed Cap Nut M8 DIN 1587	6
20	6003	Washer 8x20 DIN 125	22
21	6023	Washer 10x20 DIN125	4
22	6062	Washer 12x63	4
23	6001	Spring washer 8 DIN 127	6
24	6008	Spring washer 10 DIN 127	4
25	8003	Rivet 5x12 DIN7337	8
26	MTW60.000.000I	INSTRUCTIONS	1



				Product Description		
NAME	SIGN.	DATE	Drawing number	Vehicle Manuf.	Mitsubishi	Fiat
CHG. David		09.01.18	MTW68.000.000	Vehicle Model	Triton	Fullback
DWN. Slava		05.08.15		Drawing description	Vehicle Version	Pickup L200
CHKD. David		09.01.18	Utility Rack	VIN	MMCJYKL10GH003136	ZFAKVJY10G9007031
CONFIRM Dani				Year of Product.	2015-2018	2016-2018
<b>ASFIR LTD.</b>				Catalogue number	Gear Shift	Automatic/Manual
			597186	Motor Model	Diesel	Diesel
			Weight,kg 27.1	Transmission	4X4	4X4