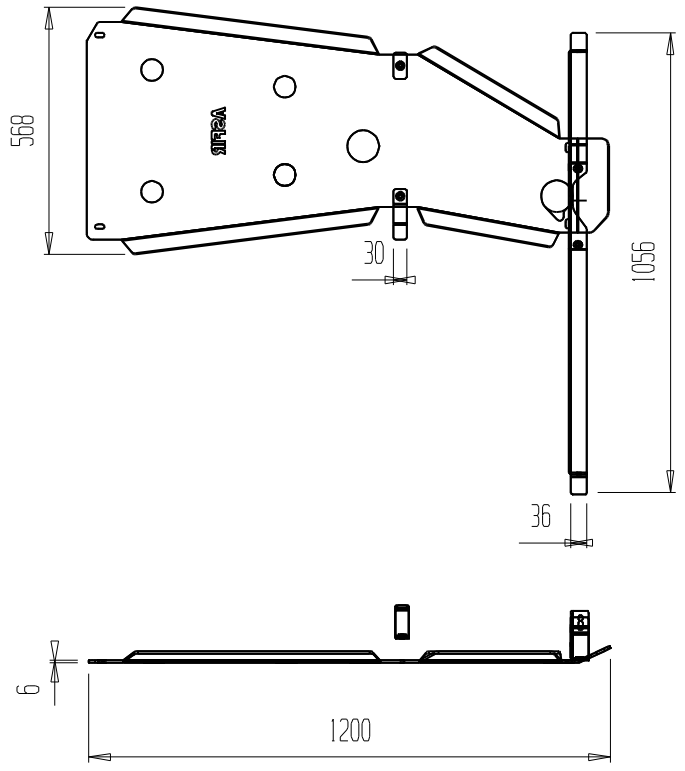


FRONT

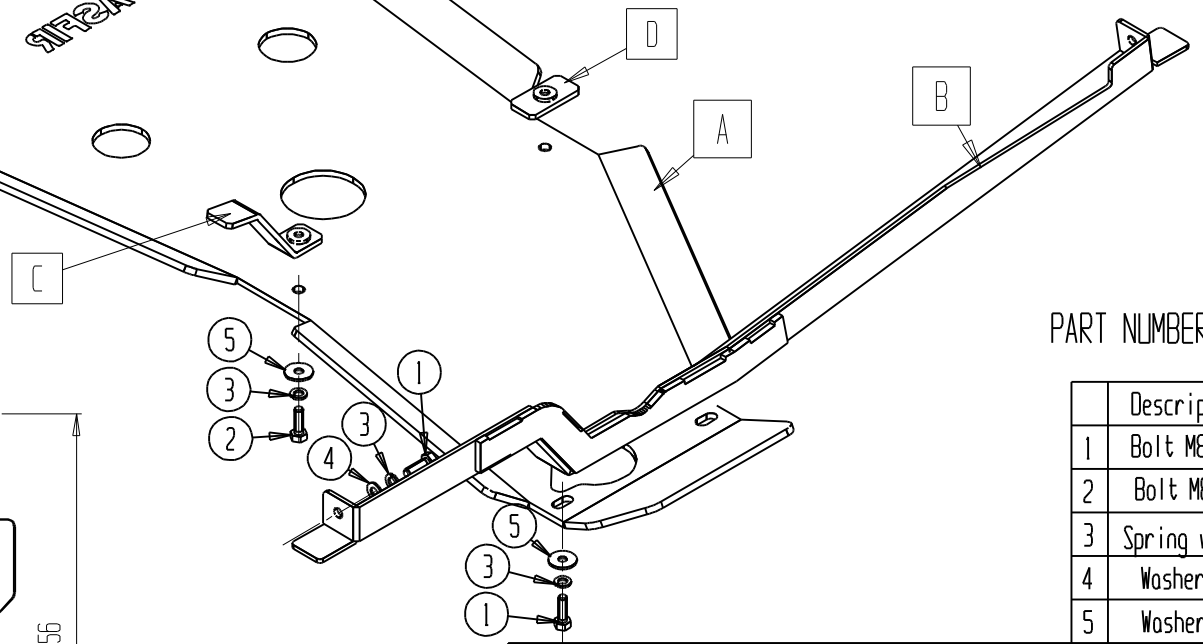
BOLT FROM FRONT S.P

GENERAL DIMENSION
DIMENSIONS IN MILLIMETERS



	Sketch number	Description
A	TYM19.000.001E	Skid Plate(x1)
B	TYM19.000.002	Back Bracket(X1)
C	TYM19.000.003	Connecting Bracket (x1)
D	TYM19.000.004	Connecting Bracket (x1)

Disassemble Original guard



PART NUMBER ASFIR 560060

	Description	Qty
1	Bolt M8x25	4
2	Bolt M8x35	2
3	Spring washer 8	6
4	Washer 8x21	2
5	Washer 8x25	4

Confidential

All rights in and to this document are the property of ASFIR Ltd.and reserved to it. This document is forwarded to the recipient under the condition of and subject to the obligation of the recipient to keep the confidentiality of its contents. Copying transfer of distribution of this document or its contents and the use of it not for the purpose intended-are strictly forbidden.

ASFIR LTD.

Draw Number

TYM19.000.000

Weight 11.5.kg

Name	Date	Signature	Date
Chg.	Charnay		30.09.13
Draw	Dfer	Dfer	31.10.04
Check	Balk		
Confirm	Dani		
Description	GEAR/TRANSFER SKID PLATE		
Connection to	TOYOTA LAND CRUISER 120 DIESEL AUTOMAT		
	2003-2009		