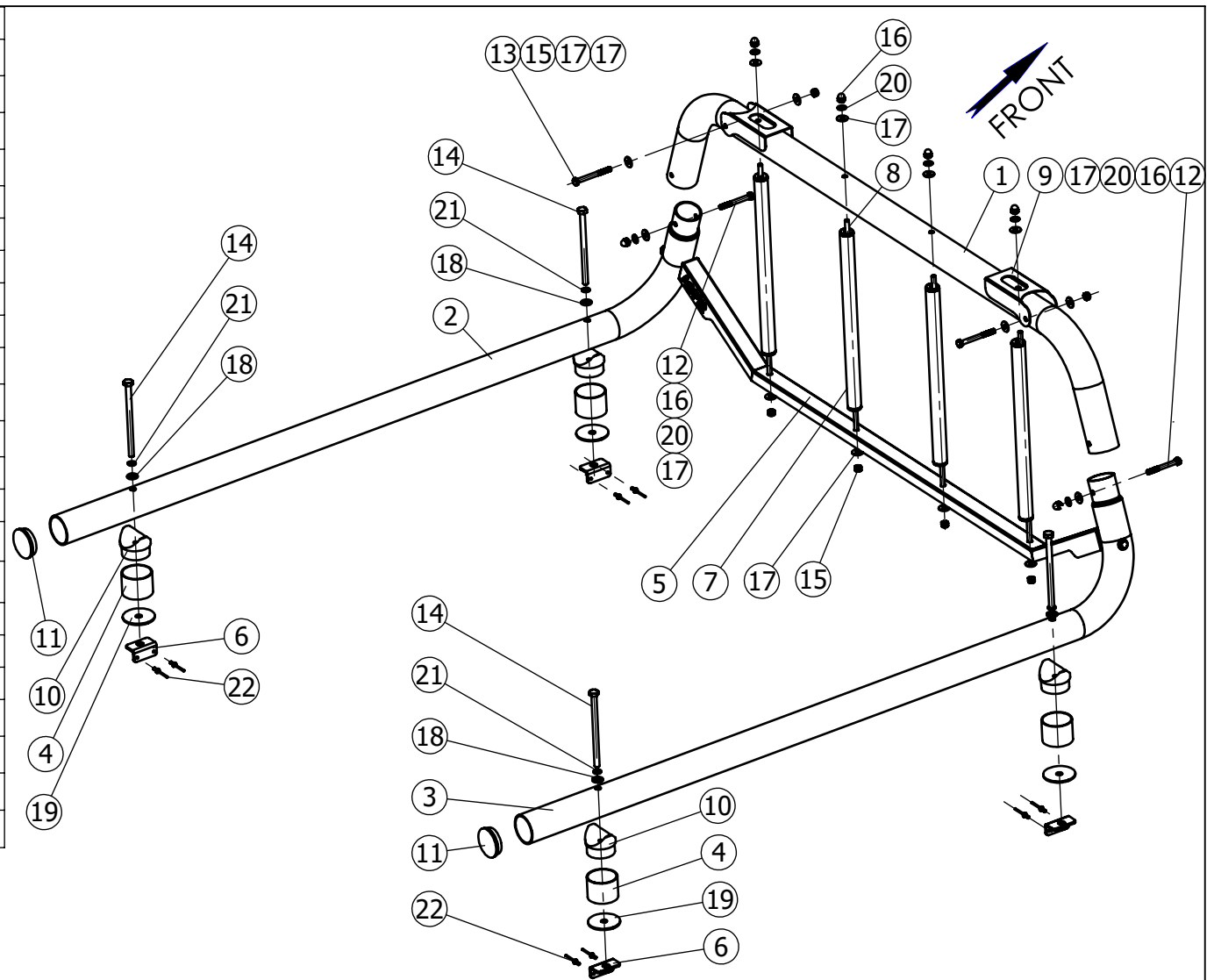


NO	PART NUMBER	DESCRIPTION	QTY
1	TYW73.000.001	Front pipe	1
2	TYW83.000.002	Left pipe	1
3	TYW83.000.003	Right pipe	1
4	TYW73.000.006	Spacer	4
5	TYW73.010.000	Lower Bar	1
6	MTW60.000.005	Rear Lower Bracket	4
7	MTW60.020.000	Pole	4
8	MTW60.000.009	Thread rod M8	4
9	DOW09.000.007	Holder	2
10	10133	Round black spacer 60	4
11	2221	Plastic plug 2"	2
12	1210	Hex Bolt M8x70 DIN 931	2
13	1058	Hex Bolt M8x80 DIN 931	4
14	1054	Hex Bolt M10x1.5x160 DIN 931	4
15	3005	Hex Nut Nylock M8 DIN 985	8
16	3100	Domed Cap Nut M8 DIN 1587	6
17	6003	Washer 8x20 DIN 125	20
18	6023	Washer 10x20 DIN125	4
19	6062	Washer 12x63	4
20	6001	Spring washer 8 DIN 127	6
21	6008	Spring washer 10 DIN 127	4
22	8003	Rivet 5x12 DIN7337	8
23	TYW83.000.100	Instructions for Toyota	1



				Drawing number	Product Description	
CHG.	Slava	SIGN.	DATE	TYW83.000.000	Vehicle Manuf.	TOYOTA
DWN.	Charnay		19.07.17		Vehicle Model	HILUX
PLN.	David		03.11.15	Utility Rack	Vehicle Version	PICK UP
CONFIRM	Dani		19.07.17		VIN	MROHB3CD00400281
ASFIR LTD.				Catalogue number	Year of Product.	2016-2017
				533088	Gear Shift	AUTOMATIC/MANUAL
				Mass, kg 28	Motor Model	DIESEL 2.4L Turbo
					Transmission	4x4

Confidential

All rights in and to this document are property of ASFIR Ltd. and reserved to it. This document is forwarded to the recipient under the condition of and subject to the obligation of the recipient to keep the confidentiality of its contents. Copying, transfer or distribution of this document or its contents and the use of it not for the purpose intended are strictly forbidden.