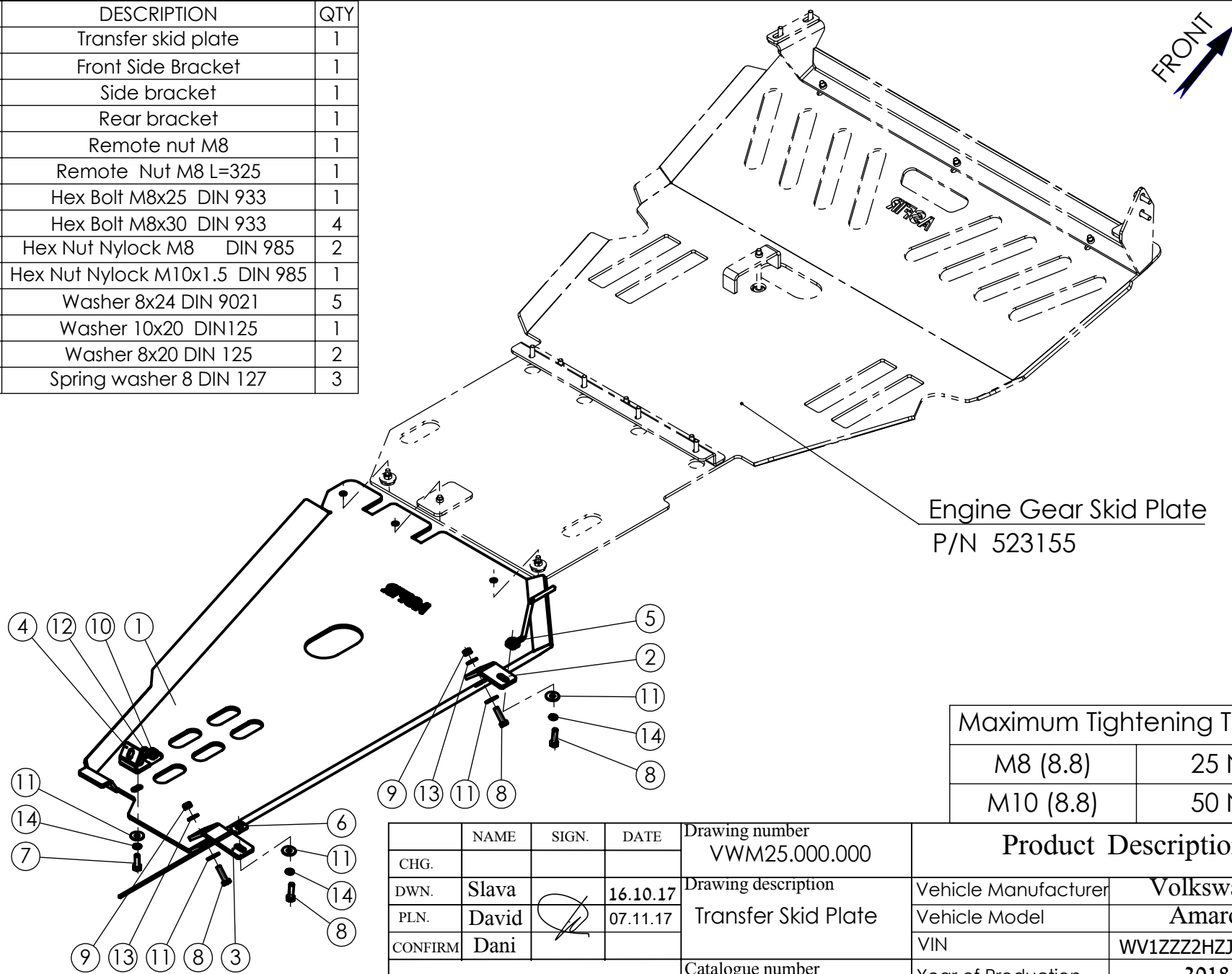


NO	PART NUMBER	DESCRIPTION	QTY
1	VWM25.000.001	Transfer skid plate	1
2	VWM25.000.002	Front Side Bracket	1
3	VWM19.000.002	Side bracket	1
4	VWM19.000.003	Rear bracket	1
5	VWM19.000.004	Remote nut M8	1
6	NSM20.000.008	Remote Nut M8 L=325	1
7	1168	Hex Bolt M8x25 DIN 933	1
8	1209	Hex Bolt M8x30 DIN 933	4
9	3005	Hex Nut Nylock M8 DIN 985	2
10	3037	Hex Nut Nylock M10x1.5 DIN 985	1
11	6000	Washer 8x24 DIN 9021	5
12	6023	Washer 10x20 DIN125	1
13	6003	Washer 8x20 DIN 125	2
14	6001	Spring washer 8 DIN 127	3



Engine Gear Skid Plate
P/N 523155

Maximum Tightening Torques	
M8 (8.8)	25 Nm
M10 (8.8)	50 Nm

				Drawing number		Product Description	
				VWM25.000.000		Vehicle Manufacturer	
				Drawing description		Volkswagen	
				Transfer Skid Plate		Vehicle Model	
				Catalogue number		AMAROK	
				523160		VIN	
				Massa, kg		WV1ZZZ2HZJH002816	
				9.5		Year of Production	
				Sheet		2018	
				Sheets		Gear Shift	
				1		Automatic	
				Transmission		Motor Model	
						Diesel 3.0L TDI V6	
						Transmission	
						4x4	

	NAME	SIGN.	DATE
CHG.			
DWN.	Slava		16.10.17
PLN.	David		07.11.17
CONFIRM	Dani		

ASFIR LTD.

Confidential
All rights in and to this document are property of ASFIR Ltd. and reserved to it. This document is forwarded to the recipient under the condition of and subject to the obligation of the recipient to keep the confidentiality of its contents. Copying transfer of distribution of this document or its contents and the use of it not for the purpose intended are strictly forbidden.