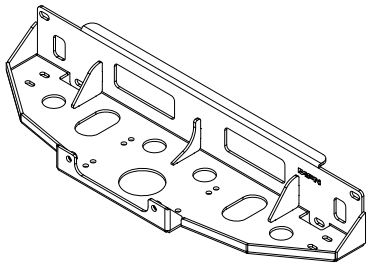


1 CHECKLIST

ALTERAR FOTO

- In this section you have a checklist with all parts included for the installation of your AFN product
- This product should be installed as demonstrated in the product fitting instructions
- If verified that any component is damaged, please contact your nearest AFN distributor
- The specified parts will only fit in the models specified by AFN
- Do not modify any component of the product

This checklist is for product **48002430**.



Ref.: 47001741



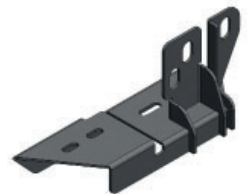
Ref.: 47001746 X1



Ref.: 47001745 X1



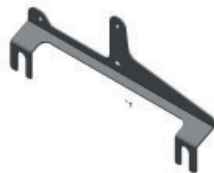
Ref.: 47001744 X1



Ref.: 47001743 X1



Ref.: 47001742 X1



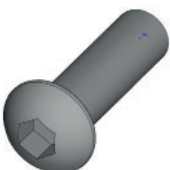
Ref.: 46007486 X1



Ref.: 46006532 X2



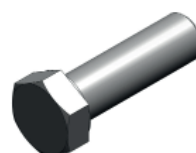
Ref.: 45001032 X2



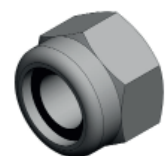
Stainless Steel
Ref.: 45000998 M6x20 X3



Stainless Steel
Ref.: 45000500 M6 X6



Zinc Plated
Ref.: 45000361 M12x40x1,25 X2

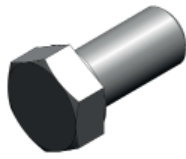


Stainless Steel
Ref.: 45000294 M6 X3



Zinc Plated
Ref.: 45000143
M12x30

X2



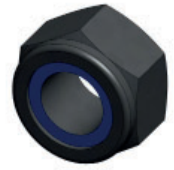
Zinc Plated
Ref.: 45000065
M12x25

X6



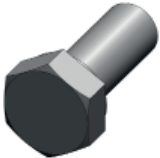
Zinc Plated
Ref.: 45000036
M12

X12



Zinc Plated
Ref.: 45000017
M10

X4



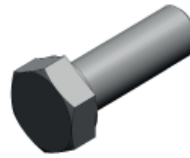
Zinc Plated
Ref.: 45000015
M10x25

X2



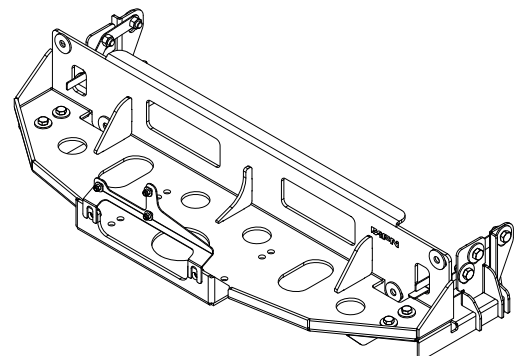
Zinc Plated
Ref.: 45000010
M10

X10



Zinc Plated
Ref.: 45000007
M10x30

X4



ALTERAR FOTO

2 FITTING INSTRUCTIONS

WARNING:

Before you begin installation, read all instructions thoroughly.
Proper tools will improve the quality of installation and reduce the time required.

- This product should be installed as demonstrated in the *Product «Fitting Instructions»*;
- The specified parts, will only fit the models specified by **AFN**;
- Do not modify any component of the product;
- It is recommended that this product is installed by specialized and trained personnel;
- AFN doesn't take responsibility for changes made in the vehicle by its manufacturer;
- Work safely and use specialized tools at all times;
- **Always use protective gear.**

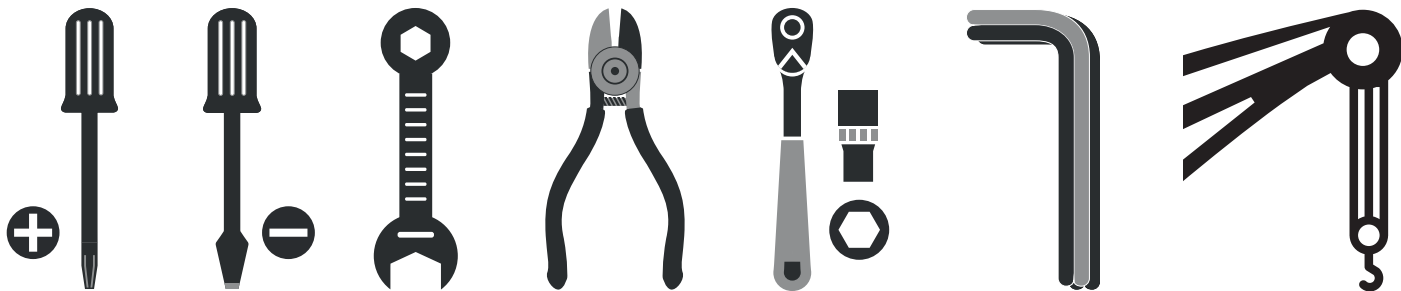


Size	Torque Nm	Torque lbft
M6	9 Nm	7 lbft
M8	22 Nm	16 lbft
M10	44 Nm	32 lbft
M12	77 Nm	57 lbft

Mouting Time

- 2 hours
- 2 persons (recommended)

Tools Required



- Screwdriver star head
- Screwdriver flat head
- Wrench
- Wire cutter
- Ratchet wrench
- Allen wrench
- Crane

ícone
angle grinder
rasp

Step 1

Remove the OEM* bumper just as specified by the vehicle manufacturer in your maintenance manual. *(Be aware that you must save the OEM* bolts and nuts, you'll reuse them later.)*

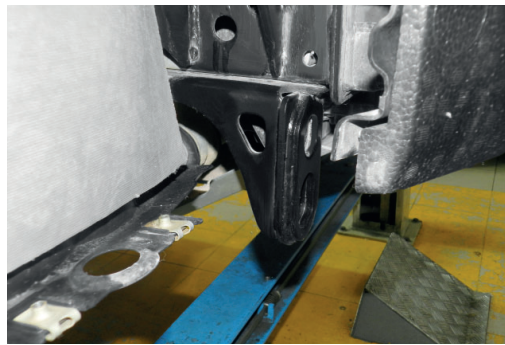
In order to be perfect, some adjustments needs to be done in the grill so, remove it aswell. *Be careful so you don't break the fasteners of the grill.*



Step 2

The OEM* Recovery Point will be fitted under the **AFN's Winch Mount** so, remove it aswell.

(Be aware that you must save the OEM bolts and nuts, you'll reuse them later.)*

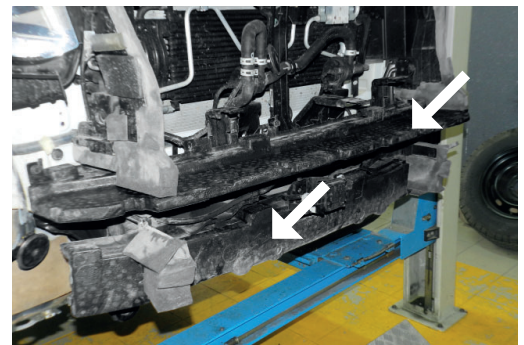


Step 3

After removing the OEM* bumper, place it on a flat work surface.

Remove the OEM* **XXXXXXX** just as specified by the vehicle manufacturer in your maintenance manual.

If you done it correctly this is what it should look like.



*OEM - Original Equipment Manufacturer

Step 4

After removing the OEM* bumper, place it on a flat work surface.

In order to cut the OEM* Bumper, here are some guidelines:

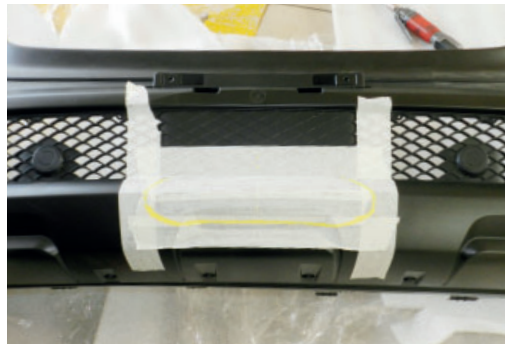
- Find middle point;
- Remove carefully the bumper's grill;
- We recommend the use of paper tape to trace the outline of the cutting area;
- Start measuring from the bottom curve (2nd image);
- The **Angle Grinder** is the most suitable tool to perform this job.
- The rough edges may be smoothen using a rasp.

1 - 15 cm | 5.91 inches (from edge to edge)

2 - 8,5 cm | 3.35 inches (from edge to edge)

3 - 1,5 cm | 0.59 inches (from edge to edge)

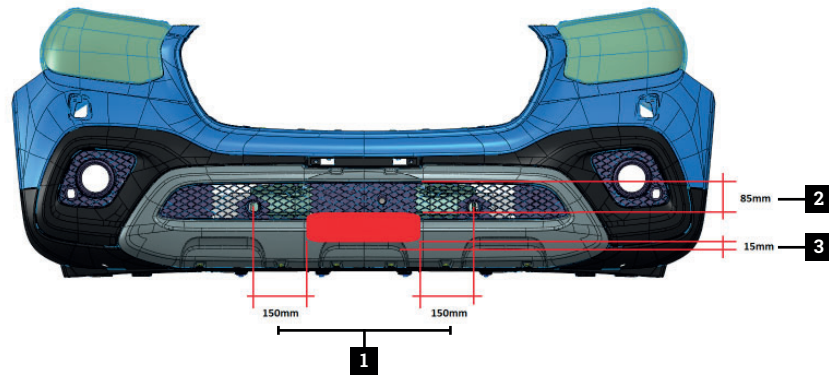
If you done it correctly this is what it should look like.



Tip: Put the **Roller Fairlead** above the cutting lines to see if it fits



ATTENTION: These measures are applied for the AFN **Roller Fairlead**



After the cut is done, if you prefer, use a rasp to smooth the rough edges.

If you done it correctly this is what it should look like.



Step 5

Before inserting the cutted OEM* bumper, fit the **AFN's Winch Mount** on the vehicle.

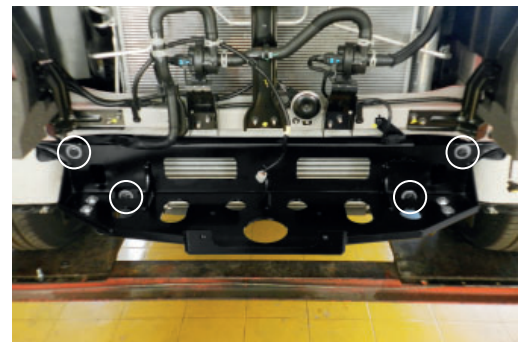
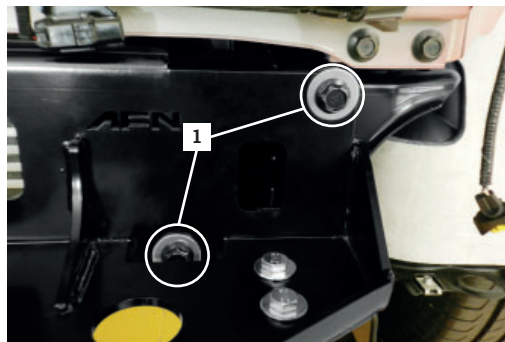
Take on part number **47001741**

- **Winch Mount**, and fit it on the chassis. Bolts needed:

1 - Reuse the OEM* Bolts; 45000036; **M12**

Repeat this step on the other side.

Just finger tight all bolts and nuts - **Do Not tighten yet.**



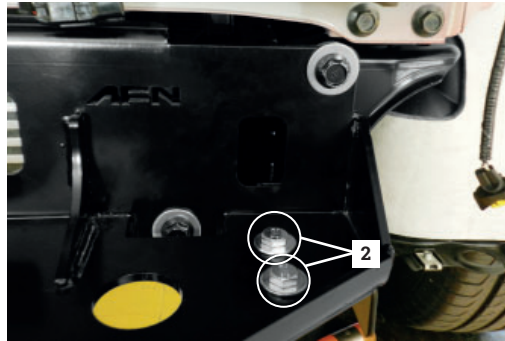
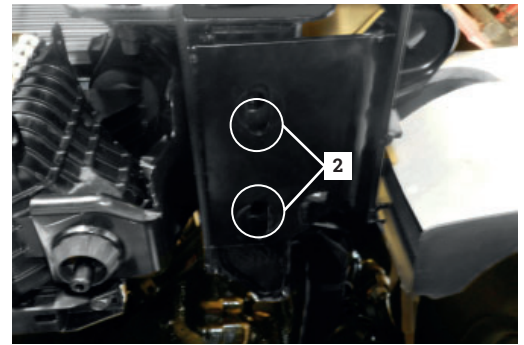
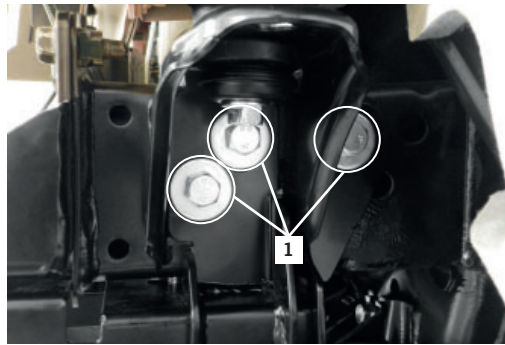
Step 6

Insert part number **47001743** - **Left XXXX** on the outer side of **AFN's Winch Mount**.

Bolts needed:
1 - 45000065; 45000036; **M12x25**
2 - 45000007; 45000010;
45000017; **M10x30**
Do the same on the other side.

Repeat this step on the other side for part **47001742** - **Right XXXX**.

Just finger tight all bolts and nuts - **Do Not tighten yet.**



Step 7

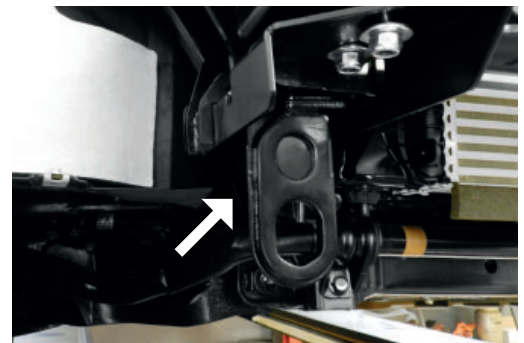
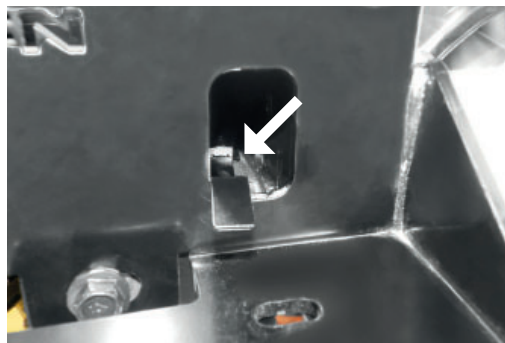
Insert part number **47001744** - on the **AFN's Winch Mount**.

Bolts needed:
1 - 45000015; 45000010; **M10x25**

Just finger tight all bolts and nuts - **Do Not tighten yet.**

Once the **AFN's Winch Mount** is fitted, re-attach the **OEM*** Recovery Point.

Give the final torque.



1 - This part is only to fit in the opposite side of the Recovery Point.

1 - OEM* Bolts under the Recovery Point.

Step 8

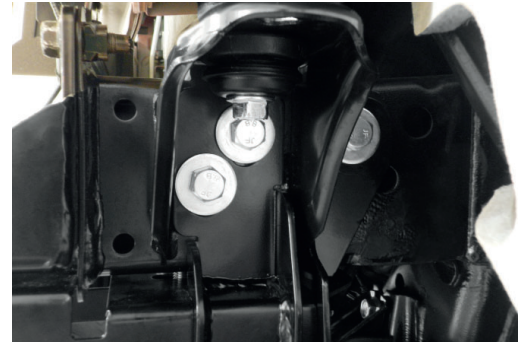
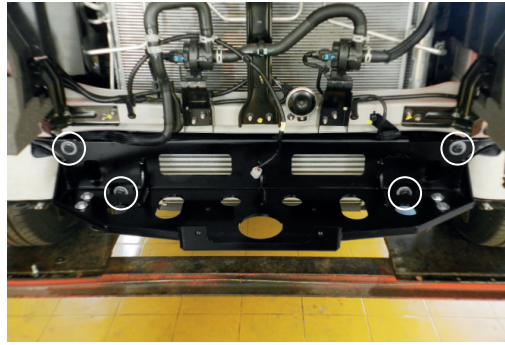
Once everything is in place, do the last adjustments and begin to full tight all the bolts.

Please follow this order:

- 1 - Winch Mount (**Front**)
- 2 - Winch Mount (**Sides**)

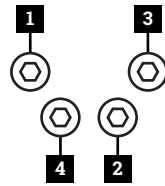
Give the final torque.

We highly recommend to follow this tightening order, once everything is in place.



1 - We highly recommend to follow this tightening order, once everything is in place.

2 - Bolts on the sides of the Winch Mount.



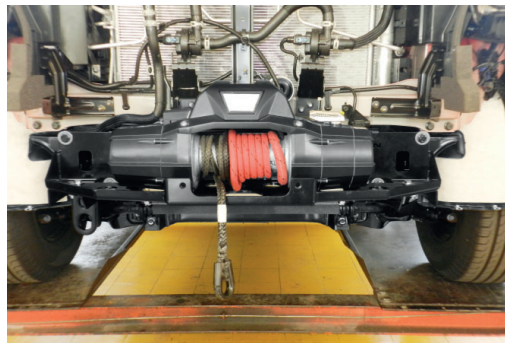
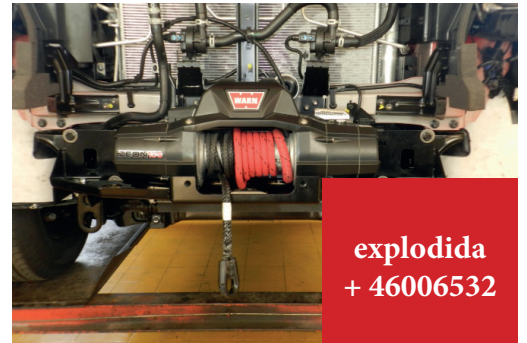
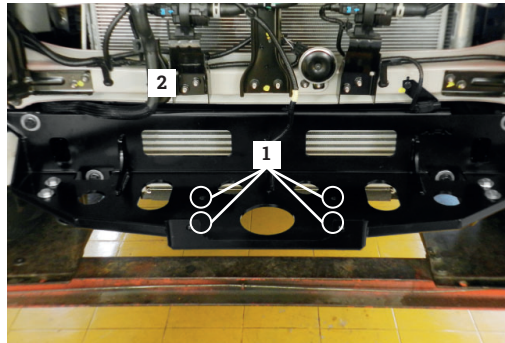
Step 9

Once the **AFN's Winch Mount** is correctly fitted, put the Winch, as shown in the image on the right, and use the OEM* bolts supplied for the Winch.

Parts needed:

- 1 - Use the OEM* Bolts;
- 2 - 46006532;

Give the final torque.



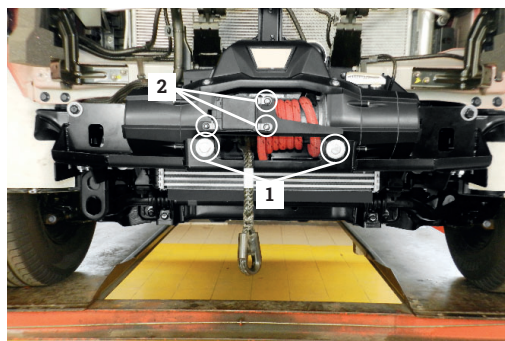
Step 10

Fit part **46007486 - Radar Bracket** (only if the vehicle has the **Active Braking Assistant**).

Bolts needed:

- 1 - Reuse the OEM* Bolts; 45000036; **M12x30**
- 2 - 45000998; 45000500 x2; 45000294; **M6x20**

Give the final torque.



*OEM - Original Equipment Manufacturer

Step 11

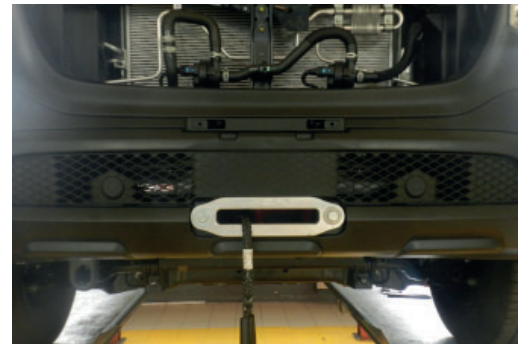
Once everything is in place, fit the OEM* bumper back to the vehicle.

Put back the grill of the bumper and check if the **Roller Fairlead** is well fitted.

If not, cut it until the Roller Fairlead fits.

Fit the OEM* Grill on the vehicle.

Be careful so you don't break the fasteners on the bumper.



Step 12

Your new **AFN WINCH MOUNT** is now installed on your **Mercedes Class X!**

Have Fun!

**ALTERAR
FOTO**

Reminder !

Before operating a vehicle fitted with an AFN Winch Mount:

- Make sure all fittings are tightened
- Check winch operation
- Check all electrical wiring attached to lights and parking sensors (if installed)

Maintenance | Care

Periodically check and tighten all nuts. Stripped, fractured or bent bolts or nuts need to be replaced.