

48002286

AFN
acessórios 4x4



Checklist / Manual de Montagem -



Checklist / Fitting Instructions -












Despiezas / Instrucciones de montaje -



2h



x 2

1 x1 47001703  <input type="checkbox"/>	2 x1 47001702  <input type="checkbox"/>	3 x1 47001701  <input type="checkbox"/>	4 x1 47001700  <input type="checkbox"/>
5 x1 47001699  <input type="checkbox"/>	6 x1 47001698  <input type="checkbox"/>	7 x1 47001697  <input type="checkbox"/>	8 x16 45000014 Prf. Cb. Sx. M8x25  <input type="checkbox"/>
9 x16 45000011 Anilha aba larga M8  <input type="checkbox"/>			

Mitsubishi L-200 Did
Triton Cab. Dupla -
Mod. 2015 (15-)



Acessórios: ___ / ___ / ___ | Peças/Compostos: ___ / ___ / ___ | Artigo: ___ / ___ / ___ | Embalagem: ___ / ___ / ___

Thank you for choosing AFN products, a lot of time in R&D has gone into perfecting our products. However, if you find problems with any AFN products you have purchased, or if you have any information which would help us to improve our products, please let us know.

If you think there may be a problem either before or after fitting the AFN product, it is best to contact your nearest AFN distributor.

WARNING

- This product should be installed as demonstrated in the product fitting instructions.
- If verified that any component is damaged, please contact your nearest AFN distributor.
- The specified parts, will only fit the models specified by AFN.
- Do not modify any component of the product.
- It is recommended that this product is installed by specialised and trained personnel.
- AFN cannot be responsible for any changes made by the vehicle manufacturer.
- Work safely and use specialised tools at all times.
- Always use protective gear.



size	Torque Nm	Torque lbft
M6	9Nm	4 lbft
M8	22Nm	16 lbft
M10	44Nm	32 lbft
M12	77Nm	57 lbft

- Tools set required:



CONTACTS

R. da Madeira, nº 113
Z. Industrial das Travessas
3700-176 S. João da Madeira
Portugal

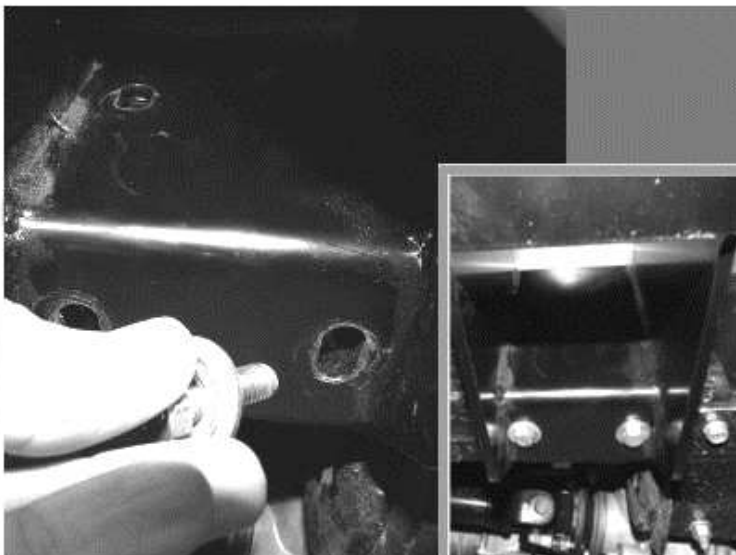
Tel.: (+351) 256 838 300
Fax: (+351) 256 838 305
www.afn.pt
geral@afn.pt

COORDINATES

DATUM: European 79
UTM 05.44.100
29T 45.28.300
N 40°54' 14.0"
W 08°28' 35.0"

01

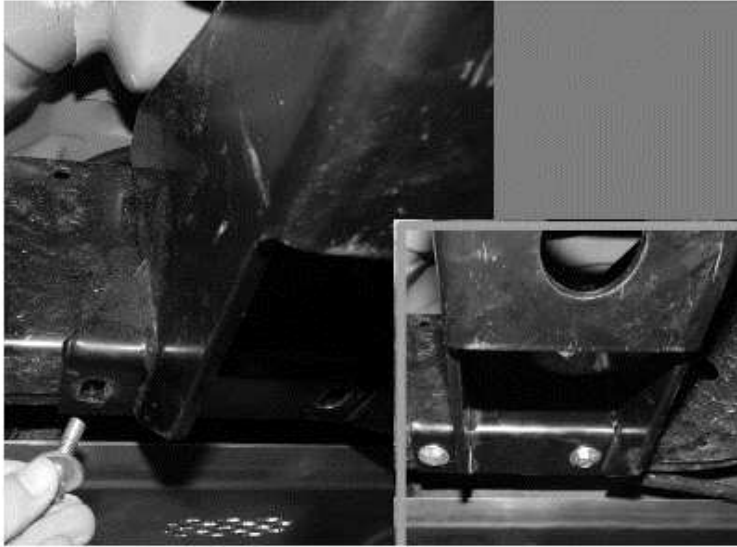
- Fit part number 47001697, on the left side;

02

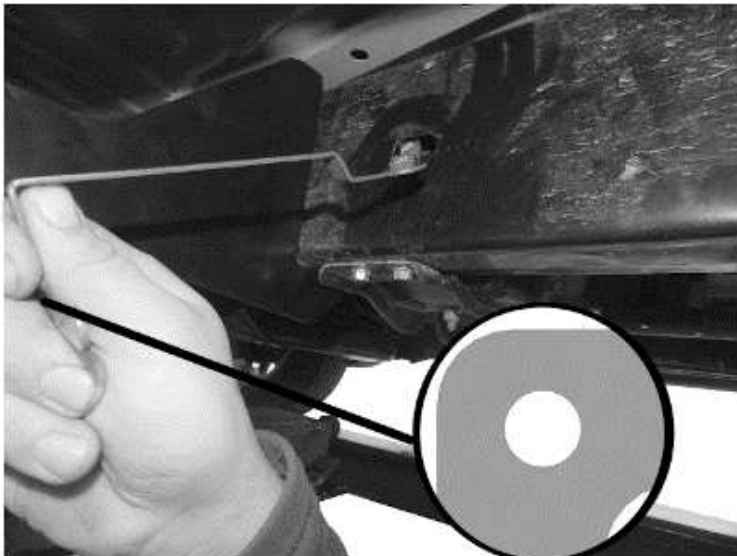
- On the front bracket, please finger the bolts 45000014 / 45000011;

03

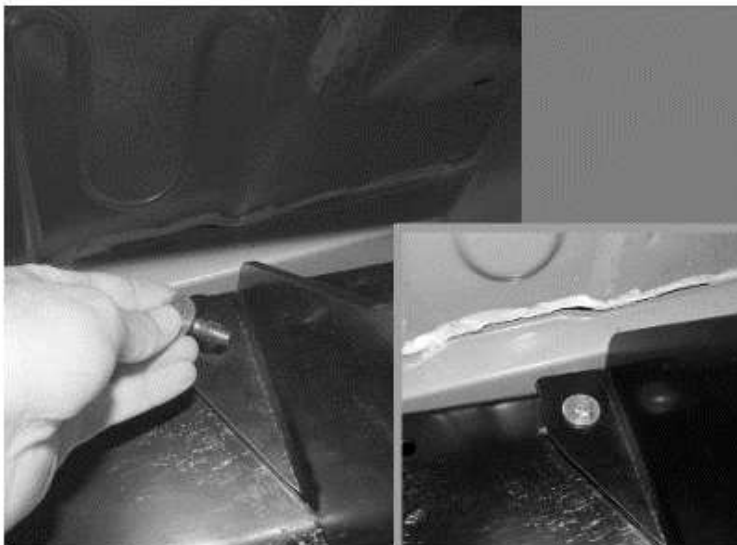
- To bolt rear bracket, insert part number 47001703, inside chassis,

04

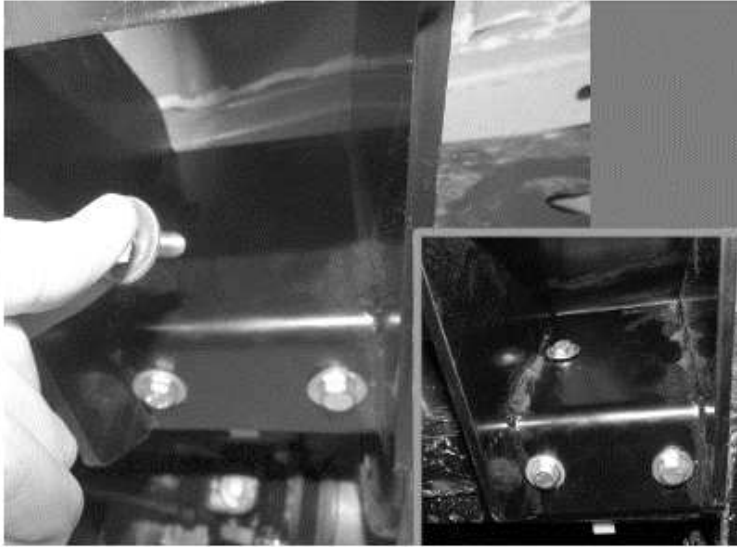
- On the rear bracket, finger tight the bolts number 45000014 / 45000011;

05

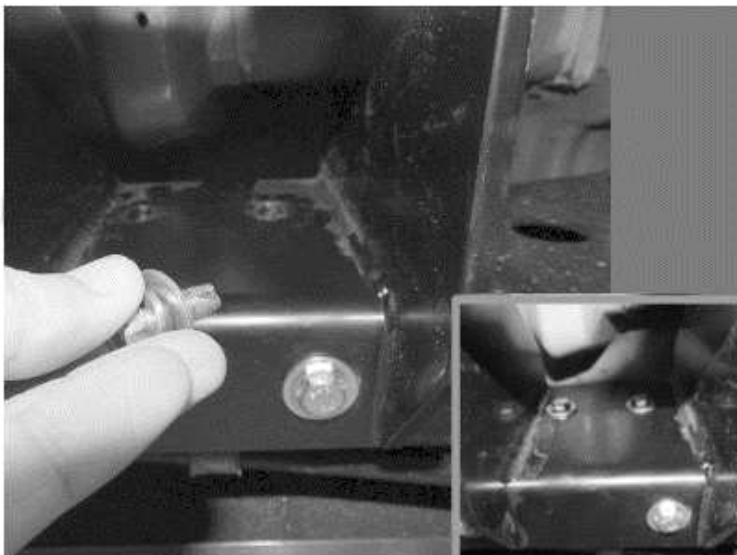
- To fit front bracket, insert part number 47001699 inside chassis;

06

- On the front bracket, please finger tight bolts 45000014 / 45000011

07

- On the front bracket, please
finger tight bolts number
45000014 / 45000011

08

- On the rear bracket, please
finger tight bolts number
45000014 / 45000011,

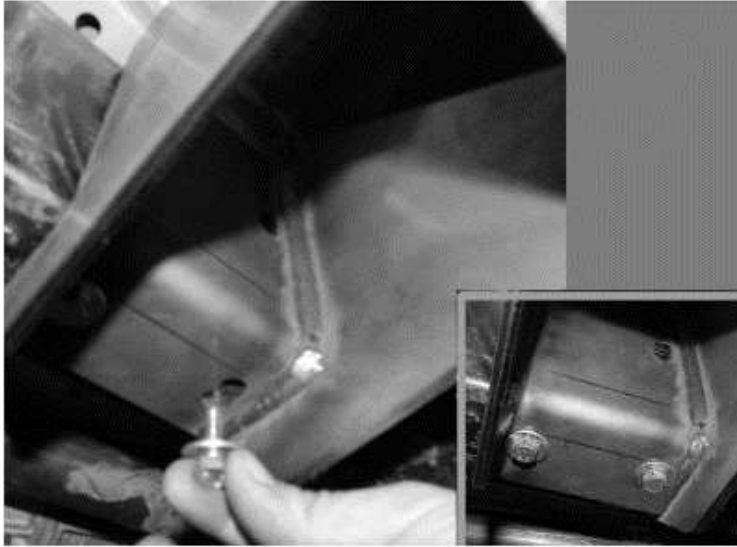
- Please do the final torque,

- Please use the right torque
settings on all the bolts (use the
table shown in the first page),

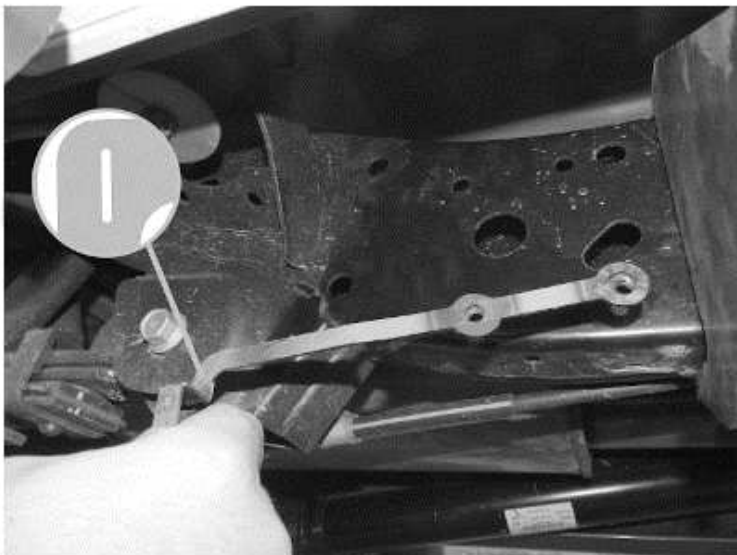
09

- On the right side fit part
number 47001698,

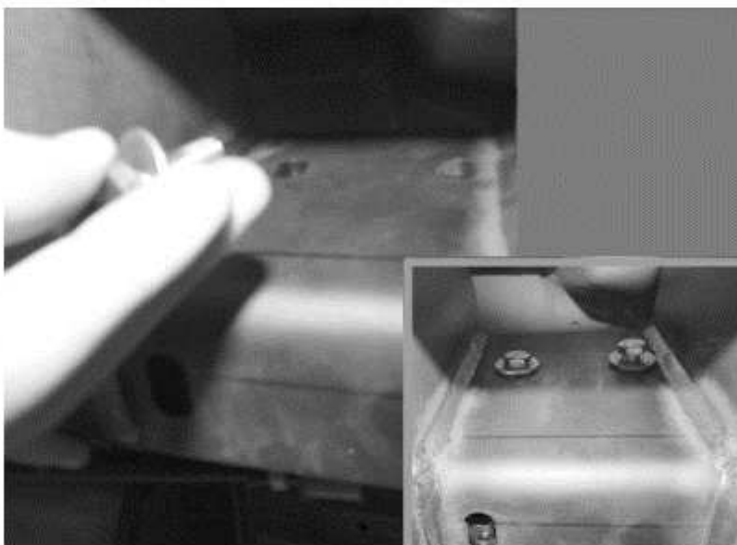
- Remove OEM bolt, fit front
bracket and then finger bolts
45000014 / 45000011,

10

- On the front bracket, please
finger tight bolts number
45000014 / 45000011;

11

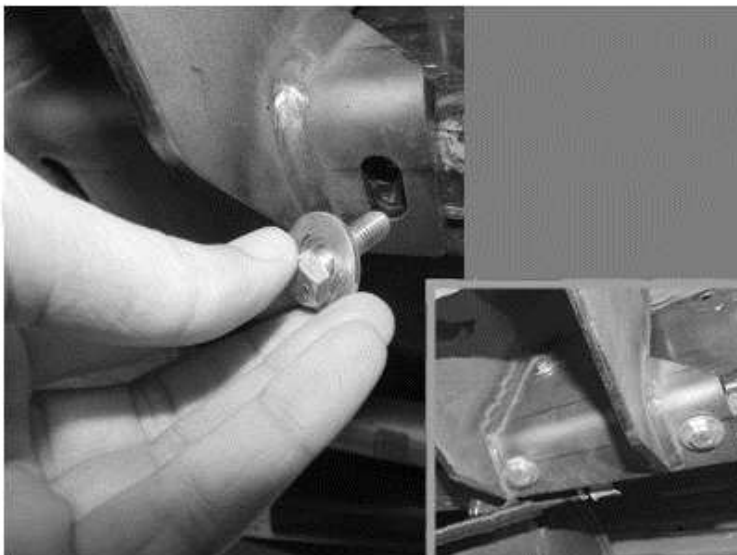
- To bolt the rear bracket, insert
part number 47001702 inside
chassis;

12

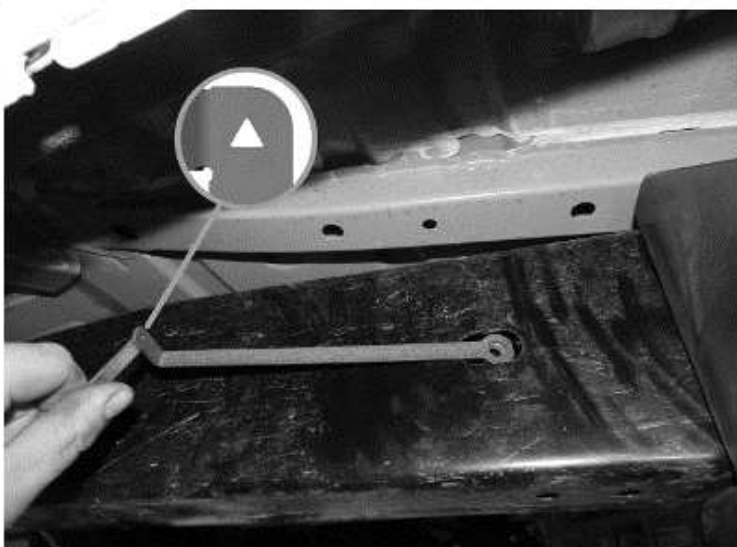
- On the rear bracket, please
finger tight boltes 45000014 /
45000011,

13

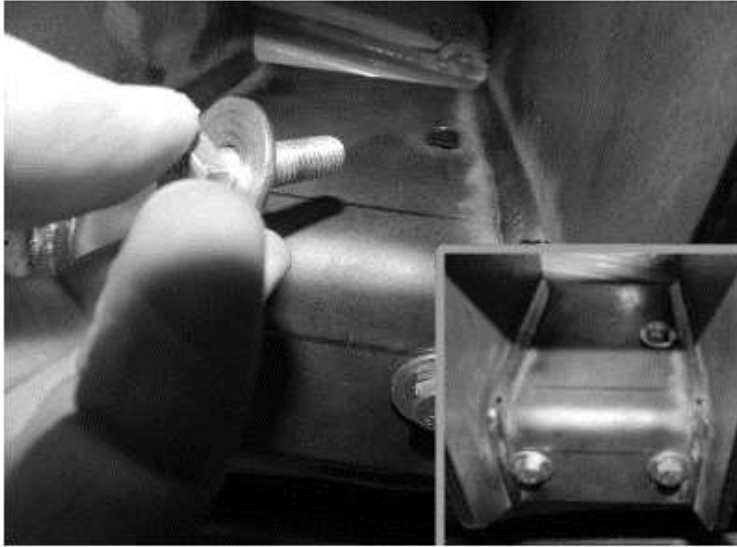
- To bolt the rear bracket, insert part number 47001701 on the inside chassis;

14

- On the rear bracket, please finger tight number 45000014 / 45000011,

15

- To bolt the front bracket, insert part number 47001700 on the inside chassis,

16

- On the front bracket, please
finger tight bolts number
45000014 / 45000011;

17

- Please do the final torque;

- Please use the right torque
settings on all the bolts, (use the
table shows in the first page),