

48002282



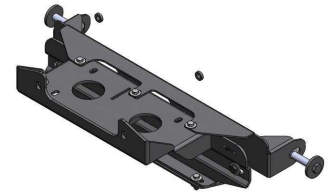
Checklist / Manual de Montagem -



Checklist / Fitting Instructions -



Despiezas / Instrucciones de montaje -



1h



1 x1



47001705

2 x1

46006371



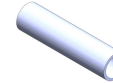
3 x2

46001265



4 x2

46006340



13-17-19



13-17-19

5 x2

46004171



6 x4

45000010



7 x4

45000247



8 x13

45000011



9 x6

45000008



10 x6

45000018



11 x4

45000066



12 x2

45000042



13 x2

45000266



14 x2

45000036



Mitsubishi L-200 Did
Triton Cab. Dupla -
Mod. 2015 (15-)



Acessórios: ___ / ___ / ___

Peças/Compostos: ___ / ___ / ___

Artigo: ___ / ___ / ___

Embalagem: ___ / ___ / ___

Thank you for choosing AFN products, a lot of time in R&D has gone into perfecting our products. However, if you find problems with any AFN products you have purchased, or if you have any information which would help us to improve our products, please let us know.

If you think there may be a problem either before or after fitting the AFN product, it is best to contact your nearest AFN distributor.

WARNING

- This product should be installed as demonstrated in the product fitting instructions.
- If verified that any component is damaged, please contact your nearest AFN distributor.
- The specified parts, will only fit the models specified by AFN.
- Do not modify any component of the product.
- It is recommended that this product is installed by specialised and trained personnel.
- AFN cannot be responsible for any changes made by the vehicle manufacturer.
- Work safely and use specialised tools at all times.
- Always use protective gear.



size	Torque Nm	Torque lbft
M6	9Nm	4 lbft
M8	22Nm	16 lbft
M10	44Nm	32 lbft
M12	77Nm	57 lbft

- Tools set required:



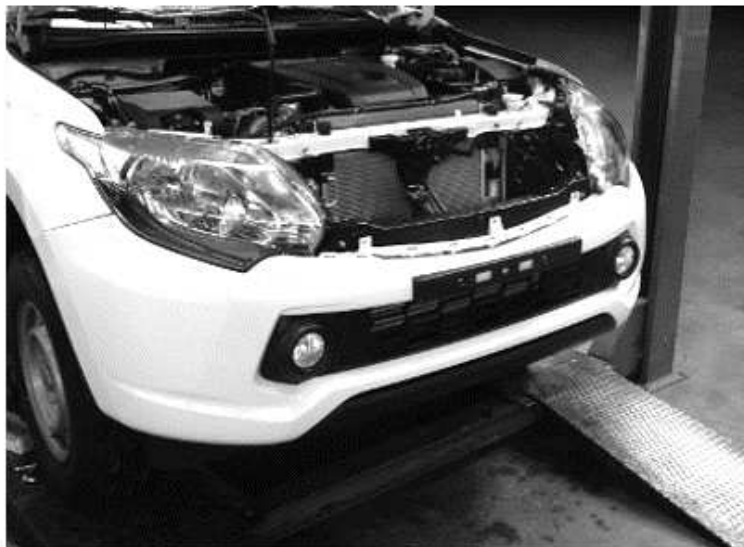
CONTACTS

R. da Madeira, nº 113
Z. Industrial das Travessas
3700-176 S. João da Madeira
Portugal

Tel.: (+351) 256 838 300
Fax: (+351) 256 838 305
www.afn.pt
geral@afn.pt

COORDINATES

DATUM: European 79
UTM 05.44.100
29T 45.28.300
N 40°54' 14.0"
W 08°28' 35.0"

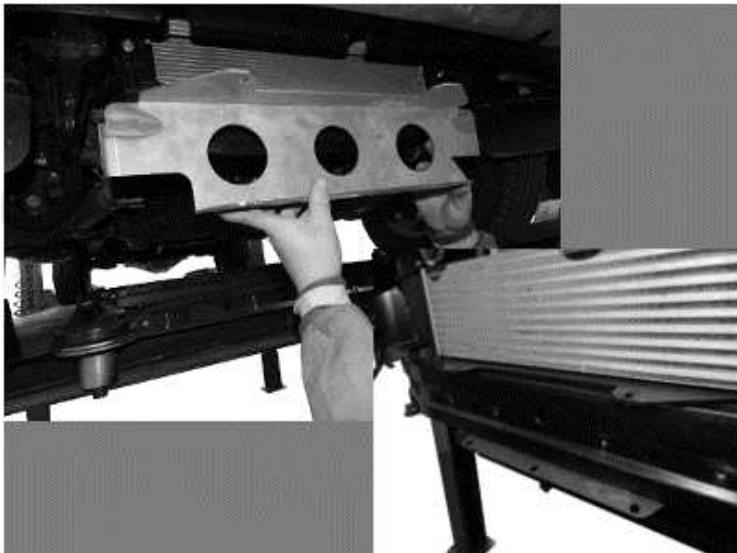
01

- Remove the OEM front grill, original bumper and oem skid plate.

02**03**

04

- Fit part number
1 - 46004171 with original bolts

05

- **!WARNING!**

To fit the part number 46006371,
please remove the intercooler.
After fitting the part number
46006371, please fit the intercooler
back again.

06

- Fit part number
1 - 46001265/ 46006340

07

Bolts needed

45000266/ 45000036/ 45000066

08

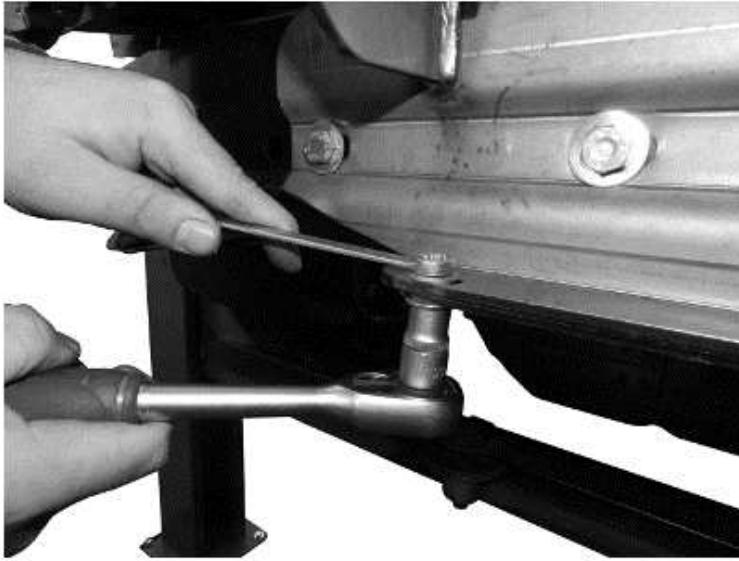
- Fit part number

1- 47001705

09

- Bolts needed

45000247/ 45000010

10

- Bolts needed
45000008/ 45000011/ 45000018

11

- Bolts needed
45000008/ 45000011/ 45000018

12

13

- The picture shows overall measurements. Please verify your winch dimensions before doing the intended cut.

14