

48002185



Checklist / Manual de Montagem - Base
guincho p/ p. choques origem - Isuzu D-Max



Checklist / Fitting Instructions - Winch
mount Plate OEM bumper - Isuzu D-Max



Despiezas / Instrucciones de montaje -



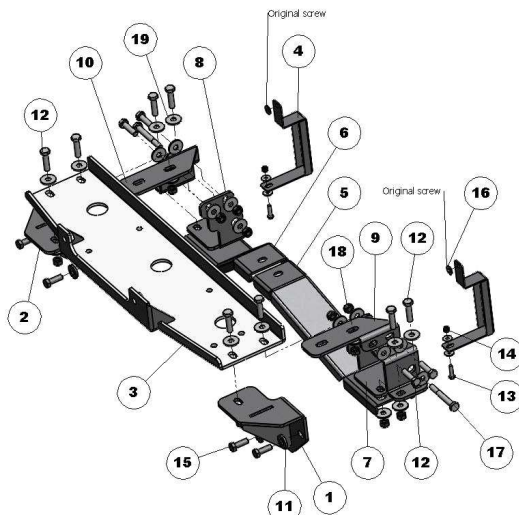
2h



1 x1 47001556	2 x1 47001555	3 x1 47000504	4 x2 46005763
5 x1 46005706	6 x1 46005705	7 x1 46005704	8 x1 46005703
9 x1 46005702	10 x1 46005701	11 x4 46005521	12 x12 45000220 Prf. Cb. Sx. M10x40
13 x2 45000077 Prf. Cb. Sx. M6x25	14 x2 45000074 Fêmea Freiada M6	15 x4 45000070 Prf. Sx. M10x30x1,25	16 x6 45000044 Anilha aba larga M6
17 x2 45000038 Prf. S.R.P.M10x80x30	18 x14 45000017 Fêmea Freiada M10	19 x28 45000010 Anilha Aba Larga M10	



Isuzu D-max Double
Cab - 2 Generation
(2014-)



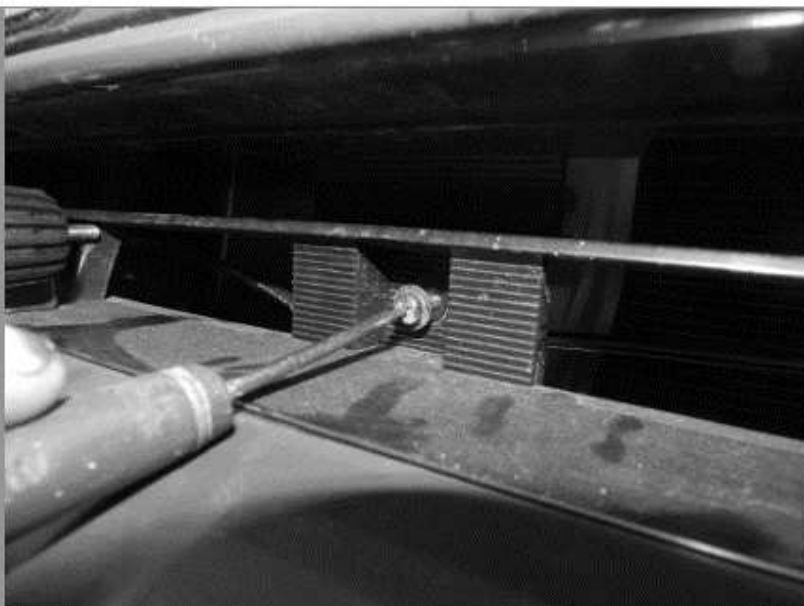
1



2



3



4



5



6



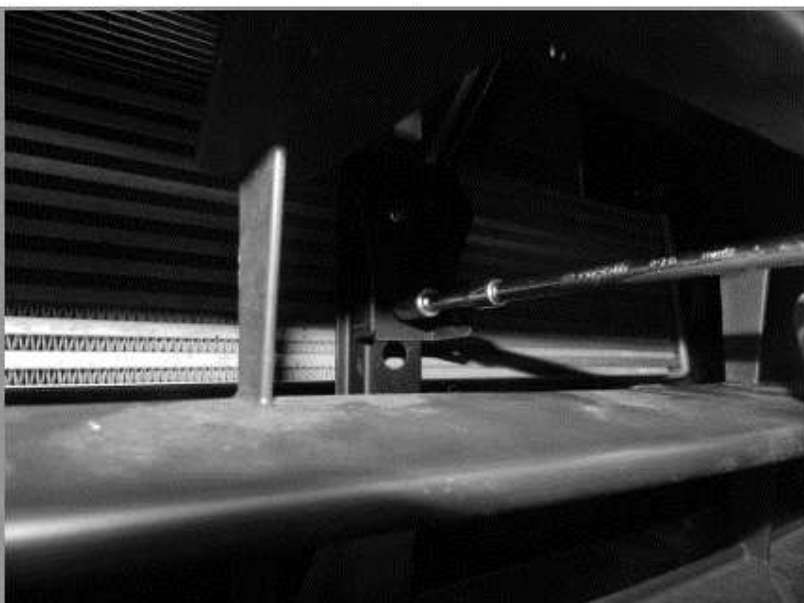
7



8



9



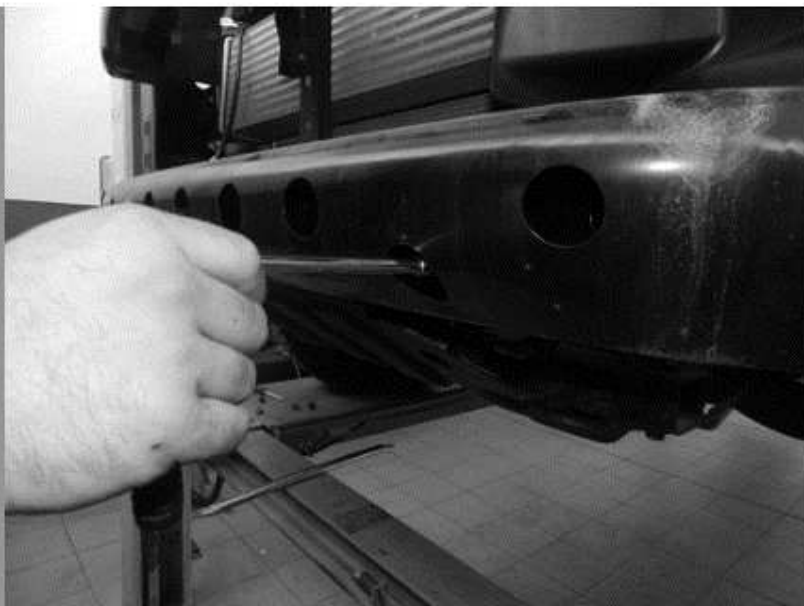
10



11



12



13



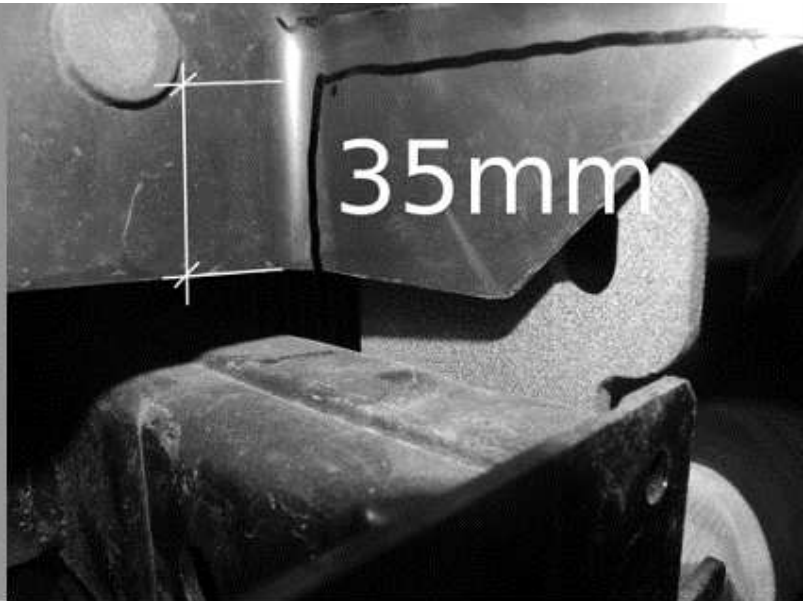
14



15



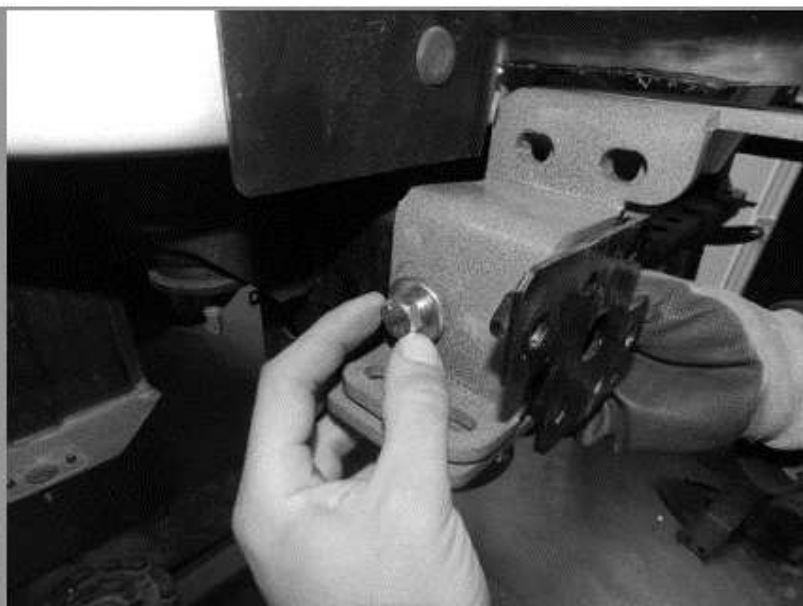
16



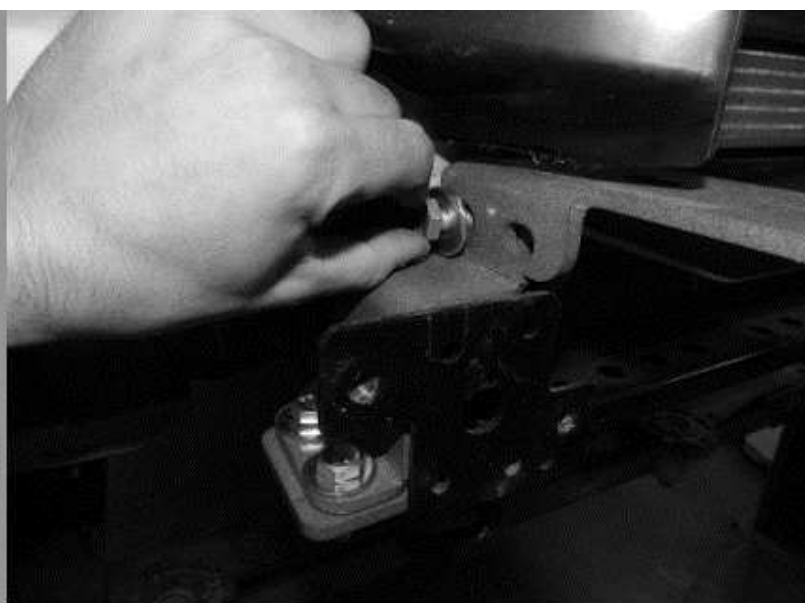
17



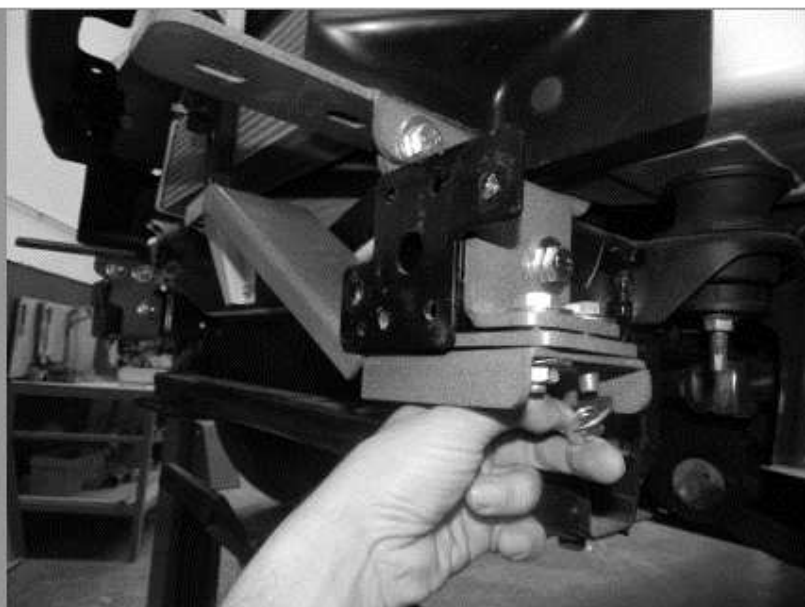
18



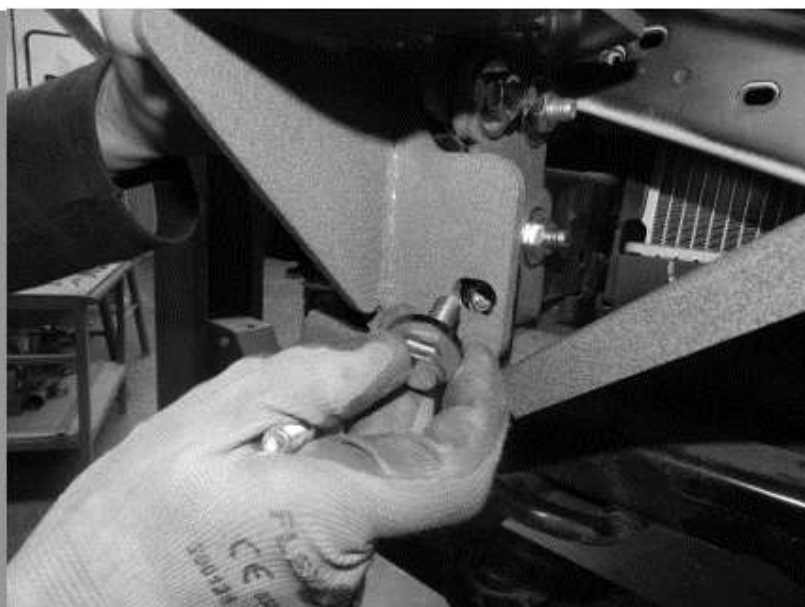
19



20



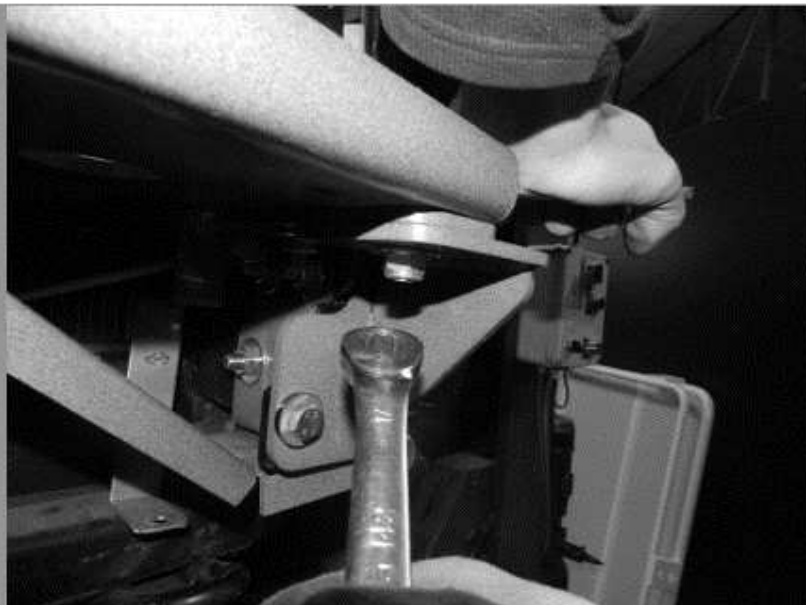
21



22



23

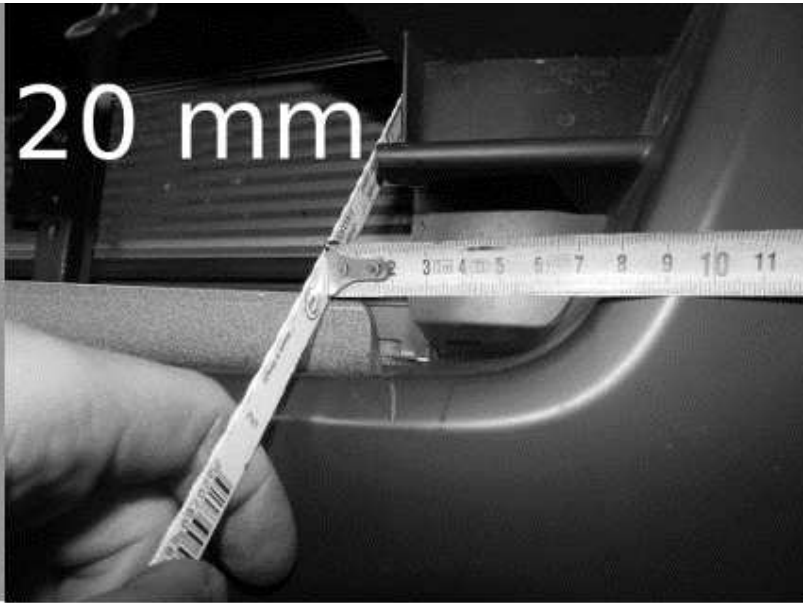


24



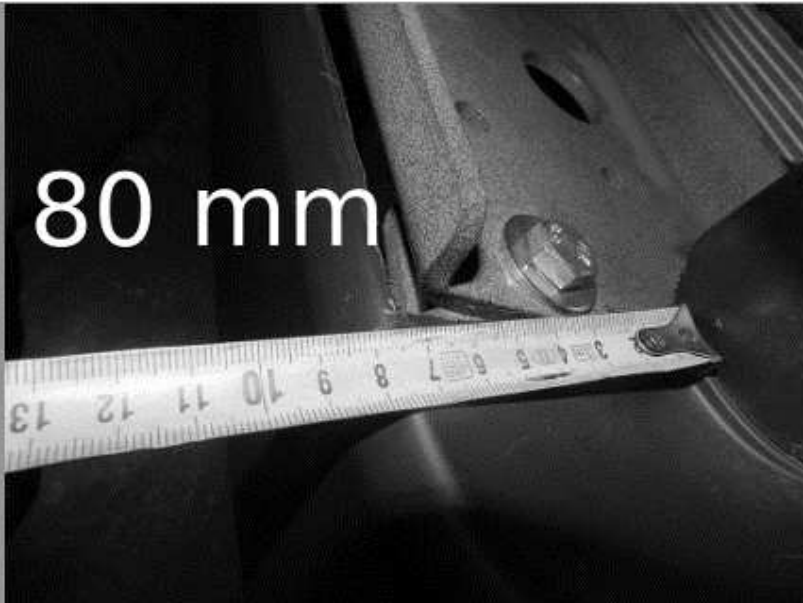
25

20 mm



26

80 mm



27



28



29

