

# 48002174



Checklist / Manual de Montagem - Winch mount Plate OEM bumper - Toyota LC 200



Checklist / Fitting Instructions - Winch mount Plate OEM bumper - Toyota LC 200



Despiezas / Instrucciones de montaje -



2h



**1** x1

4700152



**2** x6

4600552



**3** x1

4600556



**4** x1

4600556



**5** x2

4500004



**6** x2

4500003



**7** x2

4500008



**8** x2

4500004



Anilha M12

Anilha Aba Larga M12

P.R.P.M12x55x30x1,25

Anilha aba larga M6

**9** x2

4500007



Fêmea Freiada M6



Torx 30



17/19



10/12/14



14

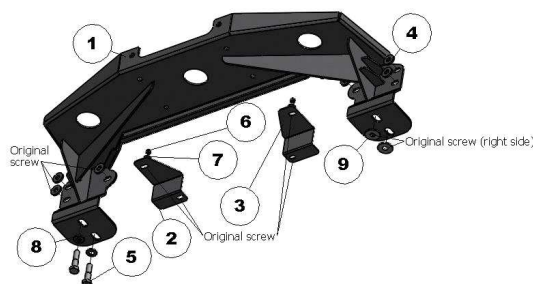


13



0

Toyota Land cruiser  
200 - Standard (2012-  
)



1



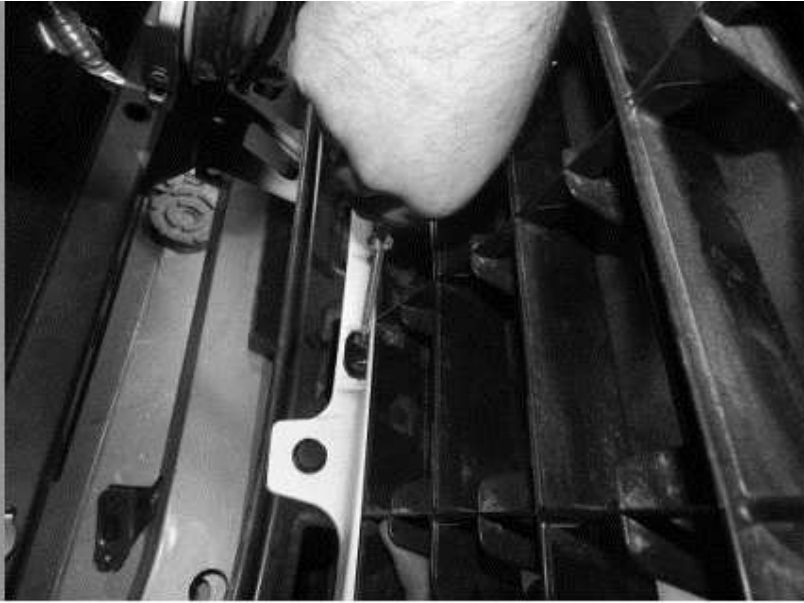
2



3



4



5



6



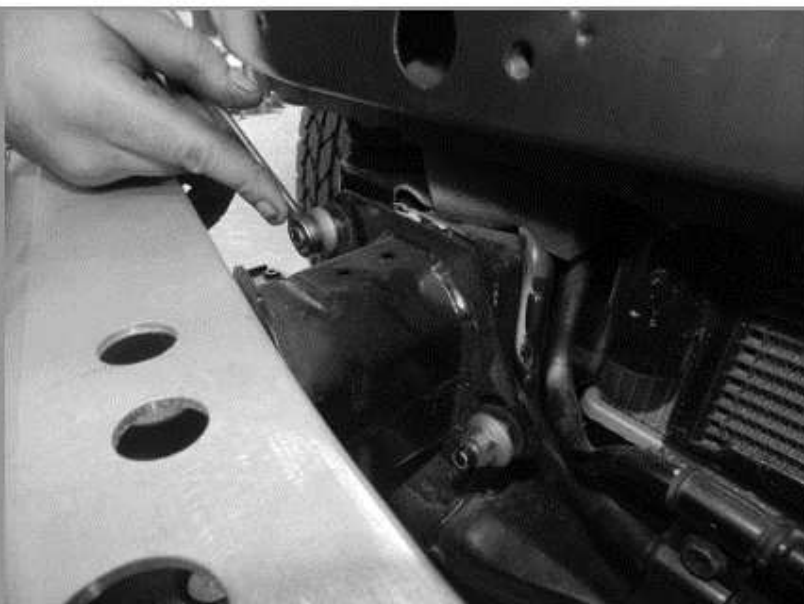
7



8



9



10



11



12



13



14



15



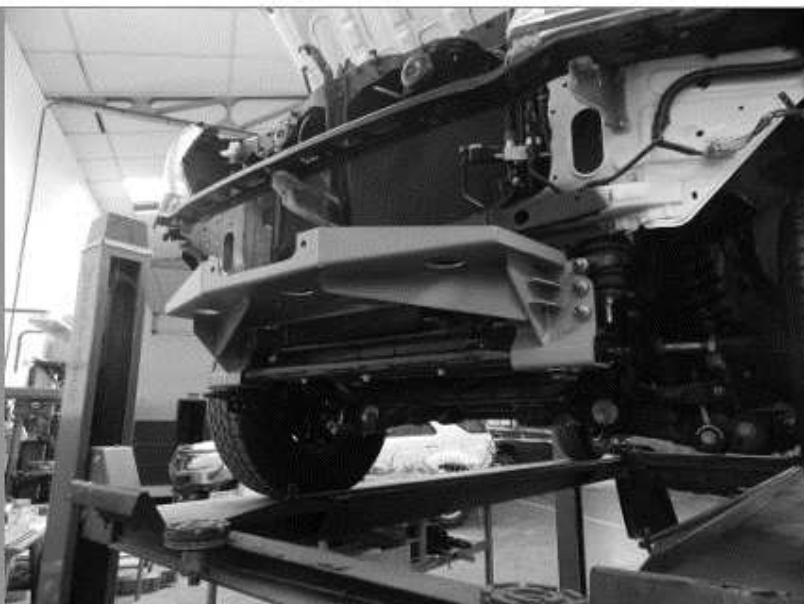
16



17



18



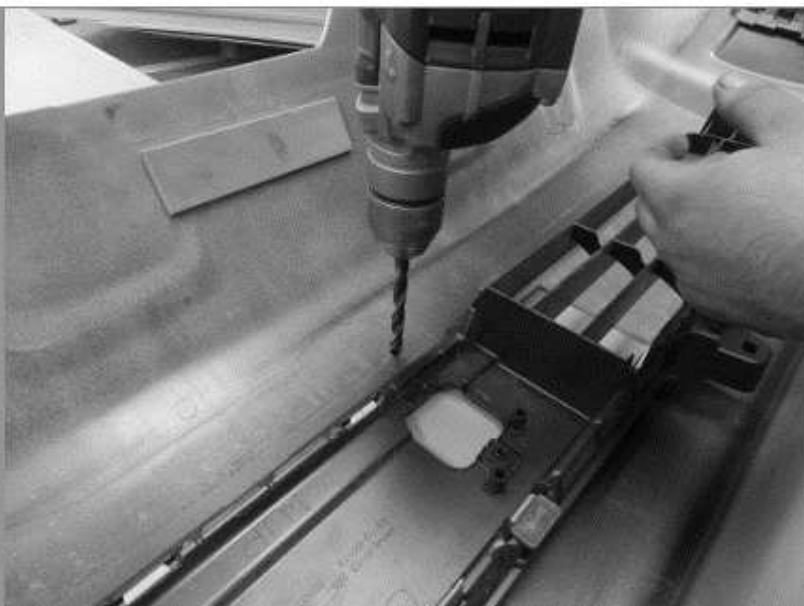
19



20



21

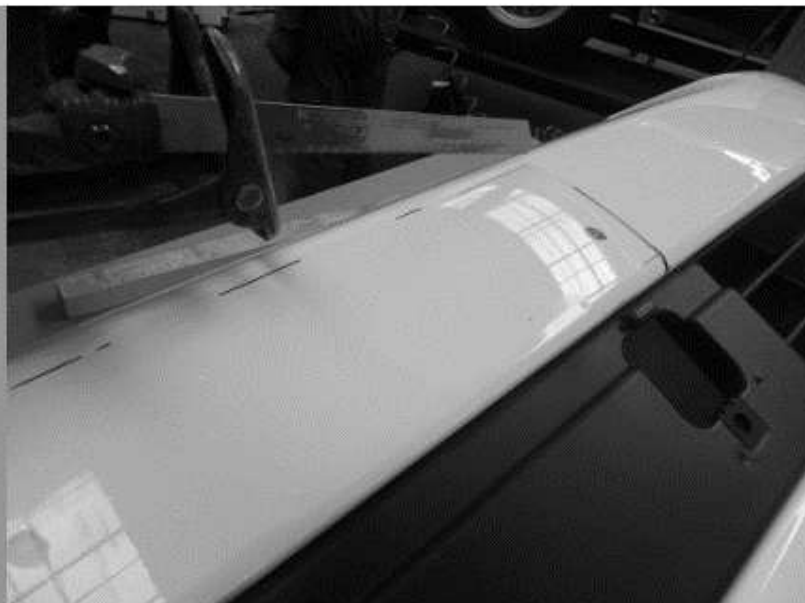




22



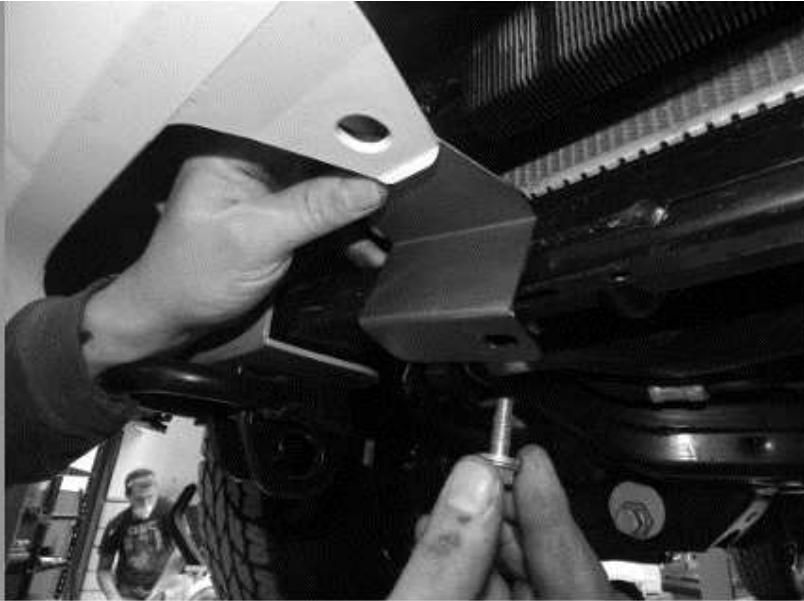
23



24



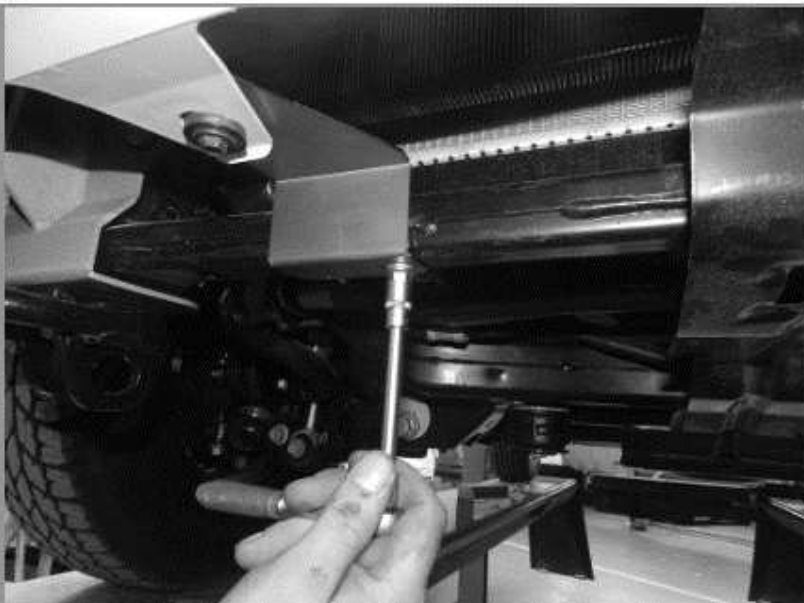
25



26



27



28



29

