

Checklist - Rear bumper 2 wheel carrier-land cruiser 78

Lista de Posições Detalhada

Produto Composto

1 47001451 x 2

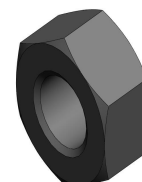
Patilha c/ fêmeas M8 aperto mancal p.ch. tras.- Fe



Acessórios do Composto

45000508 x 2

Fêmea Sext. M8 - Oxidada



46005205 x 1

Patilha p/ fêmeas aperto mancal p.ch. tras. - Fe

Material: 44000006
Chapa 1.5 - Ferro DD11 - EN 10111



2 47001450 x 2

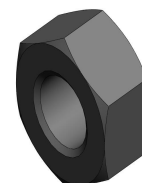
Patilha c/fêmeas M8 aperto nivelador p.ch.tras.-Fe



Acessórios do Composto

45000508 x 2

Fêmea Sext. M8 - Oxidada



46005204 x 1

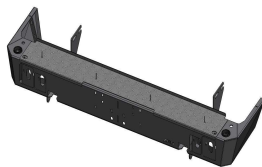
Patilha p/ fêmeas aperto nivelador p.ch. tras.- Fe

Material: 44000006
Chapa 1.5 - Ferro DD11 - EN 10111



3 47001258 x 1

P.ch. Tras. alongado p/ sup. Pneu - Prt - HZJ 78



Peças do Composto

46005519 x 1

Reforço central p.ch. tras. - Fe - LC 78

Material: 44000008

Chapa 6 - Ferro DD11 - EN 10111



46006867 x 1

Chapa esq p/ farolim p.ch.tras. Technamm- Fe -LC76

Material: 44000001

Chapa 3 - Ferro DD11 - EN 10111



46002338 x 2

Canhão do eixo P.C. traseiro - LC70/73

Material: 44000683

Tubo aço red. d.57xd.28,6



46004361 x 2

Patilha reforço canto p.ch. Tras - Prt - LC78

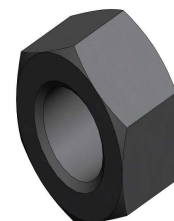
Material: 44000011

Chapa 4 - Ferro DD11 - EN 10111



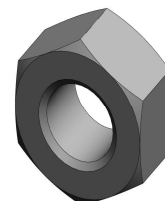
45000493 x 2

Fêmea Sext. M12 - Oxidada



45000501 x 2

Fêmea Sext. M10 - Oxidada



46006868 x 1

Chapa dir p/ farolim p.ch.tras. Technamm- Fe
-LC76

Material: 44000001
Chapa 3 - Ferro DD11 - EN 10111



45000097 x 4

Rebite M5x12 - Alumínio



46003689 x 1

Chapa dir. p/ hi-lift p.ch. Tras - Prt - Pick-ups

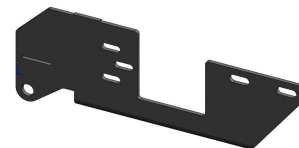
Material: 44000011
Chapa 4 - Ferro DD11 - EN 10111



46003430 x 1

Chapa dir. fix. p.ch. sup. pneu - Prt - HZJ 78

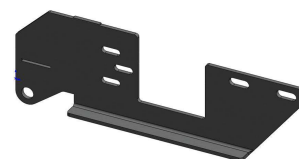
Material: 44000008
Chapa 6 - Ferro DD11 - EN 10111



46003431 x 1

Chapa esq. fix. p.ch. sup. pneu - Prt - HZJ 78

Material: 44000008
Chapa 6 - Ferro DD11 - EN 10111



46003428 x 1

Chapa estrutura p.ch. Sup. Pneu - Prt - HZJ 78

Material: 44000011
Chapa 4 - Ferro DD11 - EN 10111



46005520 x 1

Ch U reforço central p.ch.sup.pneu -Prt -LC 78

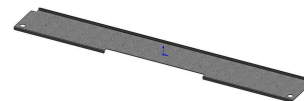
Material: 44000008
Chapa 6 - Ferro DD11 - EN 10111



46003434 x 1

Chapa p/ estribo p.ch. sup. pneu - Al - HZJ 78

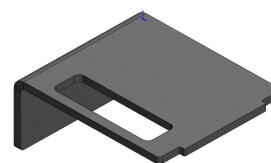
Material: 44000270
CHAPA GOTA 2+1 " ALUMINIO
4500X2100X2



46003688 x 1

Chapa esq. p/ hi-lift p.ch. Tras - Prt - Pick-ups

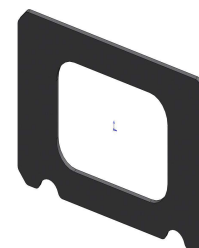
Material: 44000011
Chapa 4 - Ferro DD11 - EN 10111



46003432 x 2

Chapa reforço canhão p.ch. sup.pneu - Prt - HZJ 78

Material: 44000011
Chapa 4 - Ferro DD11 - EN 10111



46003433 x 2

Fecho canto p.ch. Sup. Pneu. - Prt - HZJ 78

Material: 44000001
Chapa 3 - Ferro DD11 - EN 10111



4 47001233 x 1

Farolim matrícula c/ ligações p/ pára-ch. Traseiro



Acessórios do Composto

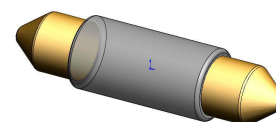
45000497 x 1

Farolim de matrícula43x100x40



45000634 x 1

Lampada p/ luz matricula 03 00204



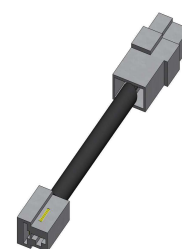
45001218 x 1

Instalação eléctrica 1 farolim de matricula



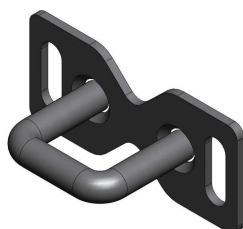
45001219 x 1

Instalação eléctrica 2 farolim de matricula



5 47001111 x 2

Mancal p/ fechos p/ p.ch tras - Zn - Ranger



Peças do Composto

46003668 x 1

Varão p/mancal fecho p.ch. Tras - Zn - Ranger



46003667 x 1

Chapa p/mancal fecho p.ch. Tras - Zn - Ranger

Material: 44000001
Chapa 3 - Ferro DD11 - EN 10111



6 47001053 x 1

Braço esq. p/ p.ch. - Prt - HZJ 78



Peças do Composto

46003659 x 1

Chapa lat. saída paraf. fecho braços - Prt

Material: 44000011
Chapa 4 - Ferro DD11 - EN 10111



46003658 x 1

Chapa lat. entrada paraf. fecho braços - Prt

Material: 44000011
Chapa 4 - Ferro DD11 - EN 10111



46003657 x 2

Chapa afinação batente p/ p.ch. - Prt - Ranger

Material: 44000001
Chapa 3 - Ferro DD11 - EN 10111



46003116 x 1

Chapa esq. p/braço p/p.ch. Tras - Prt -
Pick-up's

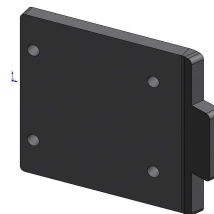
Material: 44000001
Chapa 3 - Ferro DD11 - EN 10111



46002881 x 1

Chapa reforço canhão braço Ø70 p.ch. tras. -
Prt

Material: 44000008
Chapa 6 - Ferro DD11 - EN 10111



46002880 x 1

Chapa U esq. limite braço p.ch. tras. - Prt -
Y60

Material: 44000011
Chapa 4 - Ferro DD11 - EN 10111



46002523 x 1

Canhão Ø70 p/ topo braços p.ch. tras - Fe
-Pick-up

Material: 44000682
Tubo aço red. d.70xd.45



46002485 x 1

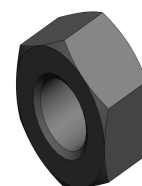
Tubo braço p/ p.ch. tras - Prt - Lc 78/76

Material: 44000174
Tubo RHS 80x40x3 - Aço ST37 -
DIN 2448



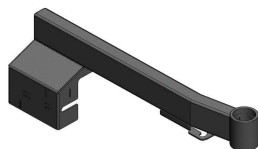
45000508 x 2

Fêmea Sext. M8 - Oxidada



7 47001052 x 1

Braço dir. p/ p.ch. - Prt - HZJ 78



Peças do Composto

46003659 x 1

Chapa lat. saída paraf. fecho braços - Prt

Material: 44000011
Chapa 4 - Ferro DD11 - EN 10111



46003658 x 1

Chapa lat. entrada paraf. fecho braços - Prt

Material: 44000011
Chapa 4 - Ferro DD11 - EN 10111



46003657 x 2

Chapa afinação batente p/ p.ch. - Prt - Ranger

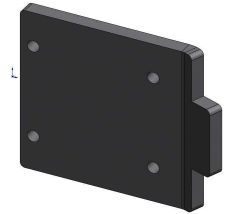
Material: 44000001
Chapa 3 - Ferro DD11 - EN 10111



46002881 x 1

Chapa reforço canhão braço Ø70 p.ch. tras. -
Prt

Material: 44000008
Chapa 6 - Ferro DD11 - EN 10111



46002879 x 1

Chapa U dir. limite braço p.ch. tras. - Prt - Y60

Material: 44000011
Chapa 4 - Ferro DD11 - EN 10111



46002523 x 1

Canhão Ø70 p/ topo braços p.ch. tras - Fe
-Pick-up

Material: 44000682
Tubo aço red. d.70xd.45



46002499 x 1

Chapa dir. p/braço p/p.ch. Tras - Prt - Pick-up's

Material: 44000001
Chapa 3 - Ferro DD11 - EN 10111



46002485 x 1

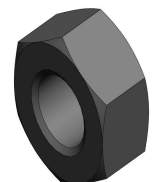
Tubo braço p/ p.ch. tras - Prt - Lc 78/76

Material: 44000174
Tubo RHS 80x40x3 - Aço ST37 -
DIN 2448



45000508 x 2

Fêmea Sext. M8 - Oxidada

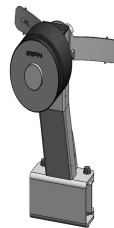


Produto Acabado

8 48001309 x 2

Suporte de pneu p/ P.choques traseiros - AFN

Material:



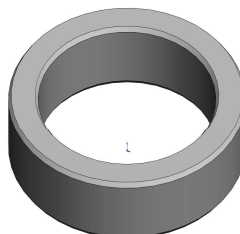
Peças

9 46007690 x 2

Casquilho p/ retentor p.choques traseiro - In

Material: 44000368

Varão liso Ø50 - Aço inox - AISI 304

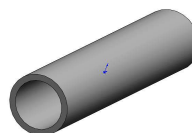


10 46005516 x 2

Casquilho p/sup.nivelador p.ch.tras-Inox -Pick-ups

Material: 44000154

Tubo CHS 10x1 - Aço inox - AISI 304



11 46005515 x 2

Nylon p/sup.nivelador p.ch.tras-Ny-Pick-ups

Material: 44000060

Varão liso 25 - Ertalon 6 SA (preto)



12 46005514 x 2

Patilha 'U' p/sup.nivelador p.ch.tras-Zn-Pick-ups

Material: 44000001

Chapa 3 - Ferro DD11 - EN 10111



13 46005369 x 1

Chapa pega esq. fecho p.ch. tras - Zn

Material: 44000008

Chapa 6 - Ferro DD11 - EN 10111



14 46005253 x 2

Peça p/topo sistema rotação braços p.ch. tras. -Ny

Material:

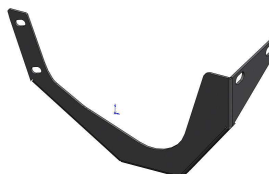


15 46004360 x 1

Reforço esq. canto p.ch. Tras - Prt - LC78

Material: 44000001

Chapa 3 - Ferro DD11 - EN 10111



16 46004359 x 1

Reforço dir. canto p.ch. Tras - Prt - LC78

Material: 44000001

Chapa 3 - Ferro DD11 - EN 10111

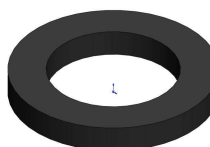


17 46004358 x 6

Nylon rotação limite braços p.ch. Tras. - Ny

Material: 44000060

Varão liso 25 - Ertalon 6 SA (preto)

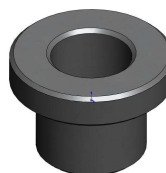


18 46004345 x 2

Casquilho de rotação limite braços p.ch. Tras. -Fe

Material: 44000227

Varão Liso 20 Aço ST37 - DIN2448



19 46004340 x 2

Anilha p/M12 Ø53 aperto rolamento p.ch. tras - Fe

Material: 44000173

Varão liso 55 - Aço ST37 - DIN 2448



20 46003952 x 4

Chapa aperto nylon braços p.ch. tras - Preto

Material: 44000005

Chapa 1 - Ferro DD11 - EN 10111

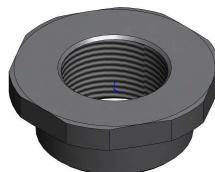


21 46003951 x 2

Fêmea M36 p/aperto veio braços p/ p.ch. tras. - Fe

Material: 44000681

Tubo aço red. d.63,5x31,5



22 46003674 x 1

Chapa pega fecho p.ch. tras - Zn

Material: 44000008

Chapa 6 - Ferro DD11 - EN 10111

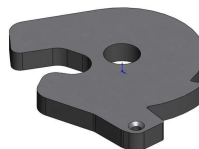


23 46003673 x 2

Chapa redonda fecho p.ch. tras - Zn

Material: 44000008

Chapa 6 - Ferro DD11 - EN 10111



24 46003672 x 2

PVC encosto nivelador p/p.ch. tras - PVC

Material:



25 46003671 x 4

Parafuso M8 c/corpo Ø10 p/ fecho p.ch tras - Zn

Material: 44000289

Varão Sext. 13 Aço ST37 - DIN 2448



26 46003043 x 1

Chapa esq. Limite braço p/ p.ch. Tras. - Prt

Material: 44000011

Chapa 4 - Ferro DD11 - EN 10111



27 46003042 x 1

Chapa dir. Limite braço p/ p.ch. Tras. - Prt

Material: 44000011

Chapa 4 - Ferro DD11 - EN 10111

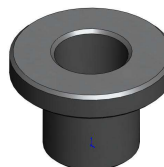


28 46002997 x 2

Casquilho de deslize limite braços p.ch. Tras. -Fe

Material: 44000177

Varão liso 22 - Aço ST37 - DIN 2448

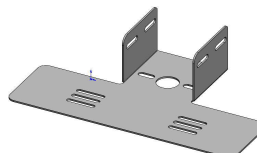


29 46002575 x 1

Chapa suporte matricula - Preto - Pick-up

Material: 44000103

Chapa 3 - Alumínio - EN AW-5754

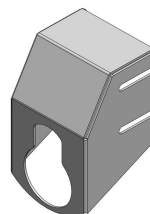


30 46002355 x 1

Chapa fix. suporte matricula universal - Al

Material: 44000103

Chapa 3 - Alumínio - EN AW-5754



31 46002340 x 2

Veio com rosca p/ canhão P.C. traseiro - LC70/73

Material: 44000076

Varão liso 50 - Aço ST37 - DIN 2448



Acessórios

32 45001133 x 2 Retentor 62x45x7



33 45001132 x 2 Retentor 55x40x7



34 45001064 x 2 Farolim LED pres./stop/pisca (Ref. 101BAR2)



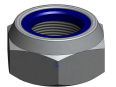
35 45001063 x 1 Farolim LED nevoeiro (Ref. 81F)



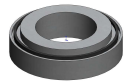
36 45001062 x 1 Farolim LED marcha atras (Ref. 81W)



37 45000874 x 2 Fêmea Freitada M30 - 8.8 Zn DIN933



38 45000872 x 2 Rolamento conico Ø55xØ30x18 (Ref. 32006X)



39 45000871 x 2 Rolamento conico Ø62xØ35x19 (Ref. 32007X)



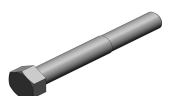
40 45000775 x 4 Parafuso de cab. Redonda M6x20 " Zn preto DIN7380



41 45000641 x 2 Mola Ø9x1x14.5 sinflex - Preto



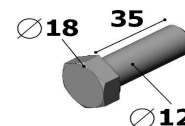
42 45000626 x 2 Paraf. cab. sxt. rsc. par. M8x60x25 - 8.8 Zn



43 45000389 x 2 Parafuso cab. cónica M5x16 - Preto



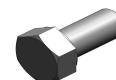
44 45000315 x 4 Parafuso cab. sextavada M12x35x1.25 - 8.8 Zn



45 45000247 x 6 Parafuso cab. sextavada M10x25x1.25 - 8.8 Zn



46 45000216 x 2 Parafuso cab. Sextavada M14x30 - 8.8 Zn DIN933



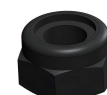
47 45000079 x 4 Batente limitador de triangulo



48 45000077 x 8 Parafuso cab. sextavada M6x25 - 8.8 Zn DIN933



49 45000074 x 12 Fêmea Freiada M6 - 8.8 Zn DIN933



50 45000070 x 4 Paraf. cab. sext. M10x30 passo1.25 - 8.8 Zn



51 45000069 x 1 Parafuso Cab. sextavada M10x35 - 8.8 Zn DIN933



52 45000058 x 12 Parafuso cab. sextavada M8x20 - 8.8 Zn DIN933



53 45000050 x 8 Anilha M6x15x1.6 - 8.8 Zn DIN933



54 45000048 x 20 Anilha M8x16x1.6 - 8.8 Zn DIN933



55 45000039 x 12 Anilha M10 - 8.8 Zn DIN933



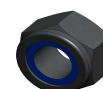
56 45000036 x 4 Anilha Aba Larga M12 - 8.8 Zn DIN933



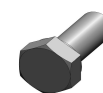
57 45000018 x 10 Fêmea Freiada M8 - 8.8 Zn DIN933



58 45000017 x 3 Fêmea Freiada M10 - 8.8 Zn DIN933



59 45000015 x 2 Parafuso cab. sextavada M10x25 - 8.8 Zn DIN933



60 45000013 x 4 Fêmea Sext. M8 - 8.8 Zn DIN933



61 45000007 x 2 Parafuso cab. sextavada M10x30 - 8.8 Zn DIN933

